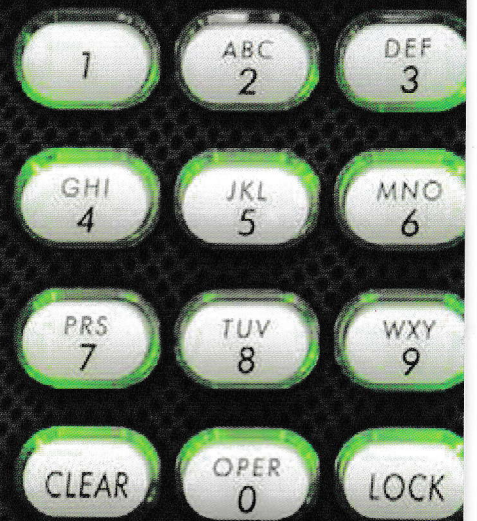




SAFEMARK™
SYSTEMS

OPENED



CONVENIENCE

SECURITY

DURABILITY

SAFEMARK™
SYSTEMS

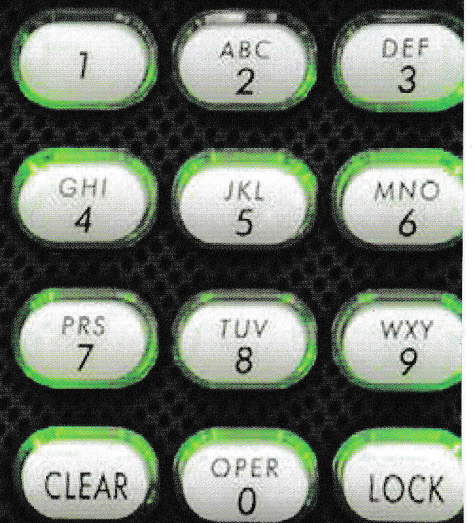
800-255-8818

407-299-0044

www.safemark.com

SAFEMARK™
SYSTEMS

OPENED



CONVENIENCE

SECURITY

DURABILITY

SAFEMARK™
SYSTEMS

800-255-8818

407-299-0044

www.safemark.com

ABOUT SAFEMARK

Safemark is the dominant provider of electronic safes to the global hospitality industry and the approved supplier of leading hotel brands and management companies. With more than one million installations and the widest selection of safes, Safemark has engineered a complete line of safes to balance the unique needs of designers, operators and hotel guests. Installations range from luxury to economy properties with models crafted to accommodate case goods, walls, closets, and more.

EXPERIENCE COUNTS

Comprised of industry veterans, Safemark's team understands the importance of timely service. We maintain commanding market share in the United States with extensive international coverage through regional offices and trusted distributor partners. We're available to collaborate with your team and design professionals to ensure the perfect fit without sacrificing security.

WHY SAFES

The proliferation of guests traveling with expensive electronic devices, increased security concerns, and the competitive pressure on hotels to provide amenities for guests have accelerated the penetration of in-room safes across all segments.

GUEST BENEFITS

- > 24/7 access to valuables in the privacy of the guest room
- > Large enough to accommodate oversized laptops
- > No waiting in line to access safe deposit box
- > Guests choose private code with no keys or cards to carry
- > Contents are covered by Safemark's exclusive \$10,000 warranty against forced entry†



Provide guests with peace of mind and freedom to explore knowing their valuables are secured in a Safemark safe.

SUPPORT



Our certified technicians and global partners are available at all hours of the day to ensure hotels get the most from their investment. Utilizing modular components, your engineering staff will have quick access to spare parts for on-the-spot repairs. Safemark safes are not over-engineered and require little maintenance.

QUALITY



We manufacture our safes & maintain complete control over product integrity. Why gamble when Safemark guarantees spare parts for the life of each safe and performs routine quality checks throughout the manufacturing process. Be confident of securing your guest's valuables today and for many years to come.

WARRANTY



As an added peace of mind, Safemark's safes include up to a five-year manufacturer's warranty and an exclusive \$10,000 limited warranty† against forced entry. These warranties provide financial reassurance and speak to Safemark's commitment to deliver quality products.



TRUST THE EXPERTS

Our durable electronic safes protect your guest's valuables and your property's reputation. Safemark's professional training and installation team ensures success - enabling you to focus on other areas of responsibility.

TRAINING



We offer a number of training options including onsite and remote with programs tailored to relevant departments. Administrative functions and detailed review of our comprehensive audit trail will be shared with those appointed by management. Preventative maintenance services are also covered.

LOGISTICS



Unless you're a new construction property, deploying guest room safes takes a great deal of facilitation. Safemark installers handle the entire process from unloading the truck to final trash removal. We have installation down to a science allowing your property to operate with little guest interruption.

INSTALLATION



Safemark employs a full-time installation team to assist properties with implementing this important guest amenity. Licensed, insured, and bonded, our team will ensure each safe is properly attached with the correct hardware. They can work independently or side-by-side with your staff, ensuring a seamless installation.

17" LAPTOP SAFES



LTX-3 SAFE

8" H x 19.5" W x 16.3" D* (30.75 lbs)

203mm H x 495mm W x 414mm D* (13.95 kg)

Available Colors: Black Silver Carbon, Brilliant White, Silver Holes or Custom Finish

Left/Right Hinging

Optional High Security Fail-Safe Key Override

Internal Light



EN 5.3 SAFE

8" H x 19.5" W x 16.25" D* (30.80 lbs)

203mm H x 496mm W x 413mm D* (13.97 kg)

Available Colors: Black or Custom

Left/Right Hinging

Optional High Security Fail-Safe Key Override

Internal Light



E 5.1 SAFE

8" H x 19.5" W x 15.75" D* (34.4 lbs)

203mm H x 496mm W x 400mm D* (15.6 kg)

Available Colors: Black, Beige or Custom

Left/Right Hinging

Optional High Security Fail-Safe Key Override

Optional Internal Light



DP 5.3 DRAWER PULL SAFE

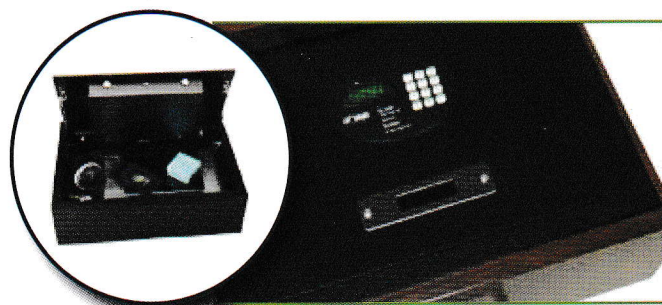
8" H x 19" W x 18.25" D* (42.70 lbs)

203mm H x 483mm W x 464mm D* (19.37 kg)

Available Colors: Black or Custom

Optional High Security Fail-Safe Key Override

Internal Light



DNX 5.4 DRAWER SAFE

5.75" H* x 20" W x 14" D (33.20 lbs)

146mm H* x 508mm W x 356mm D (15.06 kg)

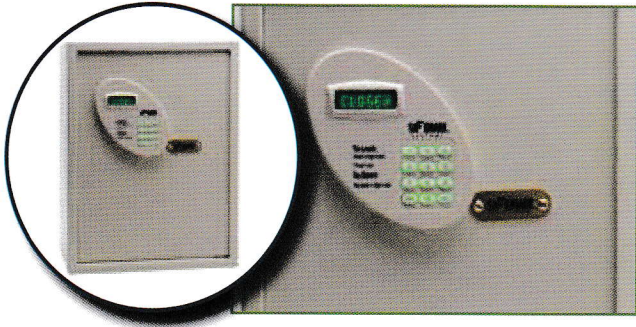
Available Colors: Black or Custom

High Security Fail-Safe Key Override

Dual Hydraulic Arm Assist

Internal Light

17" LAPTOP SAFES



SX 5.0 SURFACE MOUNT SAFE

18" H x 14.25" W x 7.125" D* (34.10 lbs)
457mm H x 361mm W x 181mm D* (15.47 kg)
Available Colors: Beige or Custom
Left/Right Hinging
Optional High Security Fail-Safe Key Override
Optional Internal Light



WX 5.0 IN-WALL SAFE

18" H x 14.25" W x 7.125" D* (37.15 lbs)
457mm H x 362mm W x 181mm D* (16.85 kg)
Available Colors: Beige or Custom
Left/Right Hinging
Optional High Security Fail-Safe Key Override
Optional Internal Light

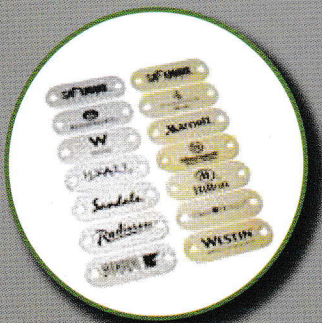


B 5.0 BRIEFCASE SAFE

21.75" H x 15" W x 17.63" D* (57.1 lbs)
553mm H x 381mm W x 448mm D* (25.9 kg)
Available Colors: Black, Beige, or Custom
Left/Right Hinging
Optional High Security Fail-Safe Key Override
Optional Internal Light
Internal Shelf

*External Dimensions with keypad

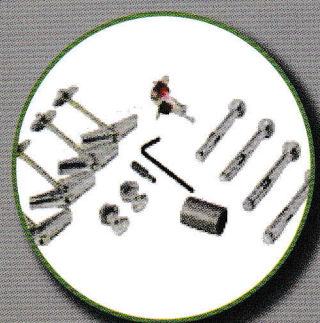
ACCESSORIES



Custom Logo Plates
(Available on Select Models)



13" Color Matched Pedestals



Install Hardware

15" LAPTOP SAFES



STX-3 SAFE

8" H x 17" W x 17.25" D* (27.9 lbs)
 203mm H x 432mm W x 438mm D* (12.7 kg)
 Available Colors: Black Silver Carbon, Brilliant White, Silver Holes or Custom Finish
 Optional High Security Fail-Safe Key Override
 Left/Right Hinging with Internal Light



AN 5.3 SAFE

8" H x 17" W x 16.75" D* (27.65 lbs)
 203mm H x 432mm W x 425mm D* (12.6 kg)
 Available Colors: Black Door with Black or Gray Body or Custom
 Optional High Security Fail-Safe Key Override
 Left/Right Hinging with Internal Light



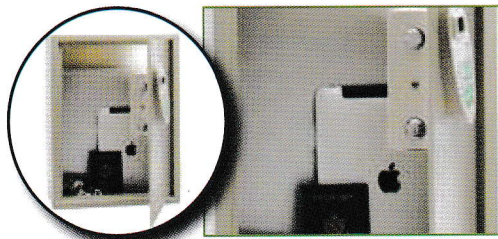
M 5.1 SAFE

9" H x 17" W x 14.75" D* (29.8 lbs)
 229mm H x 432mm W x 375mm* (13.5 kg)
 Available Colors: Black, Beige, or Custom
 Optional High Security Fail-Safe Key Override
 Left/Right Hinging with Optional Internal Light



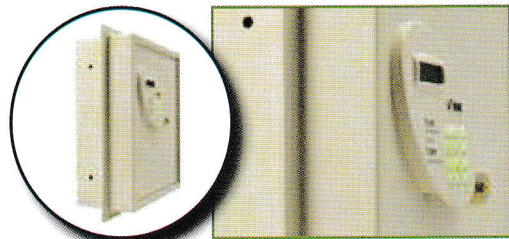
T 4.0 SAFE†

7.5" H x 14" W x 17.75" D* (25.75 lbs)
 191mm H x 356mm W x 451mm D* (11.68 kg)
 Available Colors: Black Only
 Cobra Key Override System & 2 Year Warranty
 Left/Right Hinging with Internal Light



S 5.0 SURFACE MOUNT SAFE

16.5" H x 13.75" W x 7.125" D* (31.05 lbs)
 419mm H x 349mm W x 181mm D* (14.08 kg)
 Available Colors: Beige or Custom
 Optional High Security Fail-Safe Key Override
 Left/Right Hinging with Optional Internal Light



W 5.0 IN-WALL SAFE

16.5" H x 13.75" W x 7.125" D* (35.15 lbs)
 419mm H x 349mm W x 181mm D* (15.94 kg)
 Available Colors: Beige or Custom
 Optional High Security Fail-Safe Key Override
 Left/Right Hinging with Optional Internal Light



DN 5.4 DRAWER SAFE

5.25" H* x 15.75" W x 13.74" D (28.55 lbs)
 133mm H* x 400mm W x 349mm D (12.95 kg)
 Available Colors: Black or Custom
 High Security Fail-Safe Key Override
 Hydraulic Arm Assist with Internal Light

ENHANCE GUEST EXPERIENCE

With a focus on delivering technology-enabled solutions, Safemark and Orlando-based ScooterBug merged to alter the way hospitality venues deliver guest convenience, security and mobility. Our broad range of solutions enables operators around the world to improve operational efficiencies and increase profits – all while enhancing the overall guest experience.

PERSONAL STORAGE SOLUTIONS

Founded in 1968, Best Lockers is a leading provider of electronic locker solutions to the leisure and entertainment industries. Their patented GoPod enables guests to quickly store belongings while facilities benefit with increased revenues and improved patron satisfaction.



GUEST MOBILITY SOLUTIONS

With over 300 customers and 40,000 pieces of equipment deployed, ScooterBug is the market leader in providing custom guest mobility solutions. Their customer base includes theme parks, water parks, and amusement parks, zoos, malls, casinos, hospitals, resorts and other destination locations throughout the world.



TRAVELER PRIVACY SOLUTIONS

SPEYEGUARD® stationary covers are an innovative peephole cover developed to protect against tampering. Designed to automatically self-close, SPEYEGUARD® stationary covers eliminate the issues found with swing-style and side-slide covers. SPEYEGUARD® stationary covers easily retrofit on both wood and metal doors.



PRIVACYLOGIC™

HEADQUARTERS

2101 Park Center Dr. Suite 125
Orlando, FL 32835

800-255-8818 Phone
407-299-0044 Phone
407-299-7650 Fax

ONLINE

www.safemark.com
sales@safemark.com
Skype: Safemark

INTERNATIONAL

AsiaPacific@safemark.com
Emea@safemark.com
LatinAmerica@safemark.com
Canada@safemark.com
China@safemark.com

