



MELAMINE DINNERWARE

美耐皿餐具



JB line of Melamine dinnerware, made in 100% Melamine material, with **European LFGB** and **USA NSF** testing, safe for human health. Unbreakable and saving replacement cost, dishwasher safe. Elegant various design, with complete line of dinnerware, from plates to cups, provide one stop dinnerware service, suit for different demand of different Hotels, Restaurant.

MELAMINE ROUND FLAT PLATE

美耐皿圆形平盘

Item No. 型号	Size(cm) 规格(cm)	Case Pack 外箱装量	G.Weight 外箱毛重	Meas.(cm) 外箱体积(cm)
B001	D15.3x1.6	108pcs	14kgs	32x32x21
B002	D17.8x1.8	120pcs	19kgs	37x37x21
B003	D20.3x2	48pcs	11kgs	42x21x19
B004	D22.9x2.3	48pcs	13kgs	47x24x19
B005	D25.4x2.6	36pcs	13kgs	52x26x17
B006	D28x2.8	24pcs	12kgs	29x29x23
B007	D30.5x3	24pcs	14kgs	31x31x26
B008	D33x3.3	16pcs	12kgs	34x34x23
B009	D35.6x3.5	18pcs	16kgs	36x36x22
B010	D40.7x4	12pcs	14kgs	40x40x16
B011	D43.2x4.3	12pcs	18kgs	45x45x19
B320	D15.1x2.2	96pcs	13kgs	42x30x23
B321	D17.8x2.2	96pcs	17kgs	38x38x36

B321

B320

B011

Biggest size
43.2cm

B009
B010

B001
B002
B003
B004
B005
B006
B007
B008

MELAMINE OVAL FLAT PLATE

美耐皿椭圆形平盘

Item No. 型号	Size(cm) 规格(cm)	Case Pack 外箱装量	G.Weight 外箱毛重	Meas.(cm) 外箱体积(cm)
B012	17.8x12.6x1.8	96pcs	14kgs	37x27x20
B013	20.4x14.4x2	96pcs	16kgs	42x30x21
B014	22.9x16.1x2.3	72pcs	16kgs	48x34x18
B015	25.5x18x2.5	48pcs	14kgs	38x27x23
B016	28x19.8x2.7	48pcs	18kgs	41x29x25
B017	30.5x21.5x3	36pcs	17kgs	45x32x21
B018	33.1x23.3x3.2	32pcs	18kgs	48x34x19
B019	35.6x25.1x3.5	24pcs	16.5kgs	36x26x27
B020	40.7x28.7x3.9	18pcs	17kgs	42x30x23
B021	45.7x32.3x4.4	12pcs	15kgs	47x33x18

B021

B019
B020

B012
B013
B014
B015
B016
B017
B018

MELAMINE DINNERWARE

美耐皿餐具

MELAMINE ROUND DEEP PLATE

美耐皿圆形深盘

Item No. 型号	Size(cm) 规格(cm)	Case Pack 外箱装量	G.Weight 外箱毛重	Meas.(cm) 外箱体积(cm)
B325	D17.8x3.8	72pcs	15kgs	37x37x20
B326	D20.3x4.1	60pcs	16kgs	42x42x19
B327	D22.9x4.5	48pcs	17kgs	46x22x26
B328	D25.4x4.8	36pcs	15kgs	52x26x22
B329	D30.5x5.1	24pcs	16kgs	32x32x28
B330	D35.6x5.5	18pcs	16kgs	36x36x22
B331	D40.6x5.8	12pcs	15kgs	41x41x17



MELAMINE OVAL DEEP PLATE

美耐皿椭圆形深盘

Item No. 型号	Size(cm) 规格(cm)	Case Pack 外箱装量	G.Weight 外箱毛重	Meas.(cm) 外箱体积(cm)
B187	20.4x11.6x3.4	96pcs	16kgs	42x36x23
B188	25.4x14.4x3.6	64pcs	17kgs	53x30x21
B189	30.5x17.3x3.8	36pcs	14kgs	36x32x21
B190	35.6x20.2x4	32pcs	16kgs	42x37x20
B191	40.7x23.1x4.2	24pcs	16kgs	41x24x28
B192	45.8x26x4.4	18pcs	15kgs	46x26x24
B193	50.9x28.9x4.5	16pcs	16.5kgs	52x30x23
B341	30.1x15.5x4.2	36pcs	17kgs	33x31x26



MELAMINE DINNERWARE

美耐皿餐具

MELAMINE SOUP PLATE

美耐皿汤盘

Item No. 型号	Size(cm) 规格(cm)	Case Pack 外箱装量	G.Weight 外箱毛重	Meas.(cm) 外箱体积(cm)
B311	D20.3x4.5	48pcs	19kgs	42x42x19
B312	D22.9x4.7	48pcs	23kgs	48x48x20
B313	D25.4x5	24pcs	15kgs	52x26x18
B314	D27.9x5.2	24pcs	17kgs	28x28x34
B315	D30.5x5.4	16pcs	15kgs	31x31x24
B316	D16.7x1.9	96pcs	18kgs	35x35x26
B317	D19.1x2	72pcs	19kgs	39x39x21
B318	D22.9x2.1	48pcs	18kgs	47x23x29



MELAMINE SOUP PLATE

美耐皿汤盘

Item No. 型号	Size(cm) 规格(cm)	Case Pack 外箱装量	G.Weight 外箱毛重	Meas.(cm) 外箱体积(cm)
B354	D20.3x3.9	72pcs	21kgs	42x42x19
B355	D22.9x4.2	72pcs	26kgs	48x48x20
B356	D25.4x4.5	36pcs	17kgs	53x26x21
B357	D28x4.9	24pcs	17kgs	28x28x30
B358	D30.5x5.3	24pcs	20kgs	31x31x31



MELAMINE DINNERWARE

美耐皿餐具

MELAMINE ROUND FLAT PLATE

美耐皿圆形平盘

Item No. 型号	Size(cm) 规格(cm)	Case Pack 外箱装量	G.Weight 外箱毛重	Meas.(cm) 外箱体积(cm)
B023	D12.7x1.2	198pcs	16kgs	40x40x16
B024	D15.3x1.5	144pcs	16kgs	32x32x24
B025	D17.8x1.7	96pcs	14.5kgs	37x37x19
B026	D20.3x2	72pcs	14.5kgs	42x21x25
B027	D22.9x2.2	48pcs	13kgs	47x24x19
B028	D25.4x2.5	48pcs	15kgs	52x26x19
B029	D28x2.7	36pcs	15kgs	29x29x28
B030	D30.5x2.9	24pcs	13kgs	31x31x21
B031	D33x3.2	24pcs	16.5kgs	34x34x24
B032	D35.6x3.4	18pcs	15kgs	37x37x19
B033	D40.7x3.9	12pcs	14kgs	41x41x16
B034	D43.2x4.1	10pcs	15kgs	44x44x16

Biggest size
43.2cm



B023
B024
B025
B026
B027
B028
B029
B030
B031

MELAMINE ROUND FLAT PLATE

美耐皿圆形平盘

Item No. 型号	Size(cm) 规格(cm)	Case Pack 外箱装量	G.Weight 外箱毛重	Meas.(cm) 外箱体积(cm)
B035	17.8x17.8x1.8	72pcs	15kgs	37x37x16
B036	20.4x20.4x2.1	72pcs	18kgs	42x42x16
B037	22.9x22.9x2.3	48pcs	18kgs	47x24x23
B038	25.4x25.4x2.5	36pcs	17kgs	52x26x19
B039	28x28x2.7	24pcs	14kgs	29x29x25
B040	30.5x30.5x3	24pcs	16kgs	31x31x25
B041	33x33x3.2	18pcs	15kgs	34x34x21
B042	35.6x35.6x3.4	18pcs	17.5kgs	37x37x23
B043	38.1x38.1x3.6	12pcs	14kgs	39x39x16

B043

B039

B036



B042

B041

B035
B037
B038
B040

MELAMINE DINNERWARE

美耐皿餐具

MELAMINE SOUP PLATE

美耐皿汤盘

Item No. 型号	Size(cm) 规格(cm)	Case Pack 外箱装量	G.Weight 外箱毛重	Meas.(cm) 外箱体积(cm)
B097	22.9x22.9x3.8	32pcs	17kgs	47x24x21
B098	25.4x25.4x4.2	18pcs	13kgs	26x26x24
B099	28x28x4.6	18pcs	15kgs	29x29x25
C171	D18x4.2	96pcs	17kgs	37x37x23
C172	D21.3x4.8	72pcs	19kgs	44x44x20.5
C175	D29.5x5.9	24pcs	14.5kgs	30.5x30.5x29

B099



C175

B097

B098

C172

C171

MELAMINE SOUP PLATE

美耐皿汤盘

Item No. 型号	Size(cm) 规格(cm)	Case Pack 外箱装量	G.Weight 外箱毛重	Meas.(cm) 外箱体积(cm)
C138	D22.9x6.2	72pcs	36kgs	48x48x20
C139	D25.4x6.5	24pcs	16kgs	51.5x25x25
C140	D27.9x6.8	16pcs	14kgs	28x28x22
C141	D30.5x7	12pcs	13kgs	31x31x24
C142	D33x7.3	16pcs	18kgs	33x33x30
C143	D25.4x7.8	24pcs	15kgs	52x25x21
C144	D27.9x8.2	24pcs	18kgs	28x28x38
C163	D22.9x8.3	36pcs	16.5kgs	45x22x29
B339	D23.6x6.2	72pcs	24kgs	49x49x23
B375	D31.5x3.1	24pcs	14kgs	31x31x22

C163

B375

B339

C144

C143

C142



C141

C140

C139

C138

MELAMINE DINNERWARE

美耐皿餐具

MELAMINE SQUARE FLAT PLATE

美耐皿方形平盘

Item No. 型号	Size(cm) 规格(cm)	Case Pack 外箱装量	G.Weight 外箱毛重	Meas.(cm) 外箱体积(cm)
B044	20.4x20.4x3.2	48pcs	15kgs	42x21x23
B045	25.4x25.4x4	24pcs	16kgs	52x26x17
B046	30.5x30.5x4.8	18pcs	17kgs	31x31x24
B047	35.6x35.6x5.5	12pcs	16kgs	37x37x20
B048	40.7x40.7x6.3	12pcs	21kgs	41x41x19
B049	45.7x45.7x7.1	10pcs	23kgs	46x46x16



MELAMINE SQUARE FLAT PLATE

美耐皿方形平盘

Item No. 型号	Size(cm) 规格(cm)	Case Pack 外箱装量	G.Weight 外箱毛重	Meas.(cm) 外箱体积(cm)
B069	17.8x17.8x2.3	72pcs	17kgs	37x37x16
B070	20.3x20.3x2.6	48pcs	16kgs	42x21x22
B071	22.9x22.9x2.8	36pcs	15kgs	47x24x18
B072	25.4x25.4x3.1	24pcs	14kgs	26x26x24
B073	28x28x3.4	24pcs	17kgs	29x29x26
B074	30.5x30.5x3.7	18pcs	15kgs	31x31x21
B075	33x33x3.9	18pcs	18kgs	34x34x24
B076	35.6x35.6x4.2	12pcs	15kgs	36x36x16
B077	40.7x40.7x4.8	12pcs	19kgs	41x41x17



Biggest size

45.7cm

B049



MELAMINE DINNERWARE

美耐皿餐具

MELAMINE SQUARE DEEP PLATE

美耐皿方形深盘

Item No. 型号	Size(cm) 规格(cm)	Case Pack 外箱装量	G.Weight 外箱毛重	Meas.(cm) 外箱体积(cm)
B250	15.3x15.3x3.1	72pcs	18kgs	32x32x27
B251	20.3x20.3x3.4	24pcs	12kgs	42x21x21
B252	25.4x25.4x3.7	16pcs	13kgs	27x27x29
B253	30.5x30.5x4	12pcs	15kgs	31x31x24
B254	35.6x35.6x4.3	10pcs	18kgs	37x37x22
B255	40.7x40.7x4.6	8pcs	20kgs	41x41x19
B256	45.7x45.7x4.9	5pcs	15kgs	49x49x22



Biggest size

45.7cm

B256



MELAMINE DEEP PLATE

美耐皿深盘

Item No. 型号	Size(cm) 规格(cm)	Case Pack 外箱装量	G.Weight 外箱毛重	Meas.(cm) 外箱体积(cm)
B223	30.5x23.8x3	16pcs	12kgs	37x26x21
B224	33x25.7x3.3	16pcs	14.5kgs	36x27x23
B225	35.6x27.6x3.6	16pcs	17kgs	36x32x21
B226	40.6x31.2x4.2	12pcs	17kgs	48x33x19
B227	43.2x33.2x4.5	10pcs	17kgs	46x34x15



MELAMINE DINNERWARE

美耐皿餐具

MELAMINE TRIANGLE FLAT PLATE

美耐皿三角形平盘

Item No. 型号	Size(cm) 规格(cm)	Case Pack 外箱装量	G.Weight 外箱毛重	Meas.(cm) 外箱体积(cm)
B284	15.4x15.3x2.3			
B285	17.9x17.8x2.5	84pcs	17kgs	37x37x23
B286	20.7x20.5x2.6	72pcs	20kgs	42x42x23
B287	23x22.9x2.9	36pcs	15kgs	47x24x25
B288	25.6x25.4x3	36pcs	18kgs	52x26x25
B289	28.1x27.9x3.2	8pcs	7.5kgs	29x29x25
B290	30.7x30.5x3.3	16pcs	14kgs	32x32x26
B291	33.2x33x3.5	18pcs	18kgs	33x33x29
B292	35.8x35.6x3.7	12pcs	15kgs	36x35x20



B284
B285
B289

B287



MELAMINE TRIANGLE DEEP PLATE

美耐皿三角形深盘

Item No. 型号	Size(cm) 规格(cm)	Case Pack 外箱装量	G.Weight 外箱毛重	Meas.(cm) 外箱体积(cm)
C131	17.8x17.7x6.6	48pcs	14kgs	36x24x22
C132	20.3x20.2x6.9	36pcs	14kgs	37x21x28
C133	22.7x22.6x7.3	24pcs	13kgs	44x24x23
C134	25.4x25.3x7.7	24pcs	16kgs	26x26x37
C135	27.9x27.8x8.1	24pcs	20kgs	29x29x38



C131
C132
C134

C133

MELAMINE DINNERWARE

美耐皿餐具

MELAMINE BOWL

美耐皿碗

Item No. 型号	Size(cm) 规格(cm)	Case Pack 外箱装量	G.Weight 外箱毛重	Meas.(cm) 外箱体积(cm)
C124	10.2x10x7	108pcs	14kgs	33x33x25
C125	12.7x12.6x8.7	72pcs	15kgs	41x41x23
C126	15.2x15.1x10.5	48pcs	16kgs	32x32x33
C127	17.8x17.6x12.5	36pcs	18kgs	37x37x32



MELAMINE BOWL

美耐皿碗

Item No. 型号	Size(cm) 规格(cm)	Case Pack 外箱装量	G.Weight 外箱毛重	Meas.(cm) 外箱体积(cm)
C128	15x14.8x11.6	48pcs	16kgs	31x31x35
C129	17x16.8x12.7	36pcs	17kgs	36x36x29
C130	19x18.8x13.8	24pcs	14kgs	40x40x24



MELAMINE PLATE

美耐皿碟子

Item No. 型号	Size(cm) 规格(cm)	Case Pack 外箱装量	G.Weight 外箱毛重	Meas.(cm) 外箱体积(cm)
D135	31.5x19x5.8	36pcs	16kgs	51x42x23
D146	36.6x22.2x4.2	24pcs	16.5kgs	46x38x22
C176	D23.8x6.5	36pcs	20kgs	47x47x21
B337	22.6x14.6x2.1	48pcs	13kgs	31x24x23



B337

D146

C176

D135

MELAMINE DINNERWARE

美耐皿餐具

MELAMINE SQUARE FLAT PLATE

美耐皿方形平盘

Item No. 型号	Size(cm) 规格(cm)	Case Pack 外箱装量	G.Weight 外箱毛重	Meas.(cm) 外箱体积(cm)
B115	17.8x17.8x1.3	108pcs	18kgs	37.5x37.5x23
B116	20.3x20.3x1.4	48pcs	13kgs	42x21x22
B117	22.9x22.9x1.5	48pcs	17kgs	47x23x23
B118	25.3x25.3x1.5	36pcs	16kgs	52x26x19
B119	27.9x27.9x1.8	24pcs	14kgs	29x29x28
B120	30.5x30.5x1.9	24pcs	17kgs	32x32x29
B121	33x33x2	18pcs	16kgs	34x34x25
B122	35.6x35.6x2	16pcs	17kgs	37.5x37.5x23
B123	40.6x40.6x2.1	10pcs	15kgs	42x42x16



MELAMINE RECTANGULAR FLAT PLATE

美耐皿长方形平盘

Item No. 型号	Size(cm) 规格(cm)	Case Pack 外箱装量	G.Weight 外箱毛重	Meas.(cm) 外箱体积(cm)
B106	20.4x11.8x1.2	96pcs	15kgs	38x21x22
B107	22.8x13.8x1.2	72pcs	15kgs	47x24x18
B108	25.4x16x1.4	64pcs	18kgs	34x26x26
B109	28x18x1.4	48pcs	17kgs	37x29x22
B110	30.3x20x1.7	36pcs	17kgs	42x31x19
B111	32.9x22x1.9	24pcs	15kgs	34x23x28
B112	35.5x24.3x2	24pcs	17kgs	37x25x29
B113	38x26.9x2	18pcs	16kgs	39x28x23
B114	40.5x29.7x2.1	12pcs	14kgs	42x31x17



MELAMINE DINNERWARE

美耐皿餐具

MELAMINE SQUARE FLAT PLATE

美耐皿方形平盘

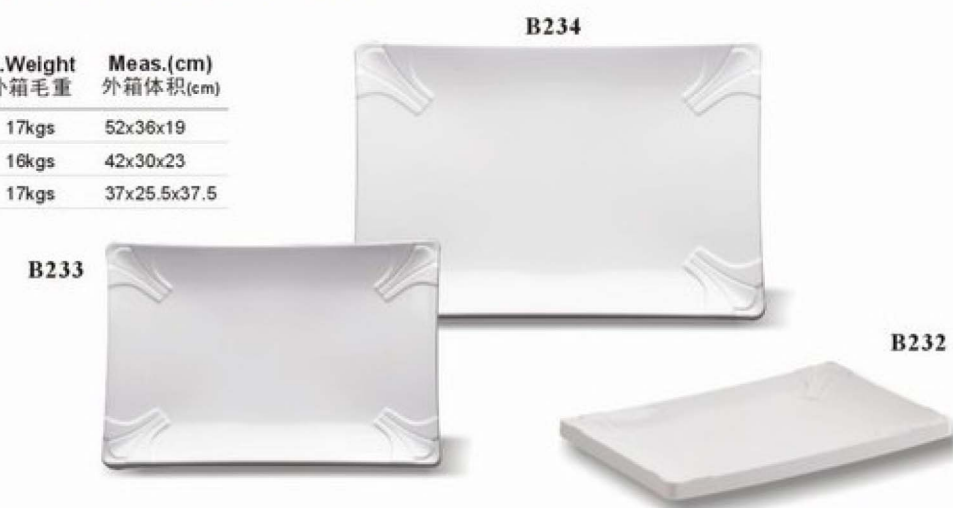
Item No. 型号	Size(cm) 规格(cm)	Case Pack 外箱装量	G.Weight 外箱毛重	Meas.(cm) 外箱体积(cm)
B228	20.3x20.3x1.8	48pcs	14kgs	42x22x25
B229	25.1x25.1x2.3	36pcs	18kgs	53x27x23
B230	30.5x30.5x2.7	16pcs	14kgs	32x32x25
B231	35.6x35.6x3.1	12pcs	16kgs	37x37x22



MELAMINE RECTANGULAR FLAT PLATE

美耐皿长方形平盘

Item No. 型号	Size(cm) 规格(cm)	Case Pack 外箱装量	G.Weight 外箱毛重	Meas.(cm) 外箱体积(cm)
B232	25.4x17.3x3.1	36pcs	17kgs	52x36x19
B233	30.5x20.8x3.3	24pcs	16kgs	42x30x23
B234	35.6x24.2x3.7	18pcs	17kgs	37x25.5x37.5



MELAMINE RECTANGULAR FLAT PLATE

美耐皿长方形平盘

Item No. 型号	Size(cm) 规格(cm)	Case Pack 外箱装量	G.Weight 外箱毛重	Meas.(cm) 外箱体积(cm)
B166	49x32x5	10pcs	18kgs	49x32x19
B167	56.8x37x5.5	10pcs	23kgs	60x40x28.5
B168	60x45x6	6pcs	20kgs	63x48x24.5

Biggest size

60cm



MELAMINE DINNERWARE

美耐皿餐具

MELAMINE ROUND FLAT PLATE

美耐皿圆形平盘

Item No. 型号	Size(cm) 规格(cm)	Case Pack 外箱装量	G.Weight 外箱毛重	Meas.(cm) 外箱体积(cm)
B124	D37x2.6	16pcs	15kgs	37x37x23
B125	D41x2.9	12pcs	15kgs	41x41x18
B126	D46x3.2	10pcs	16kgs	46x46x16
B127	D51x3.5	8pcs	17kgs	51x51x15
B128	D56x3.8	6pcs	17kgs	56x56x12



MELAMINE OVAL FLAT PLATE

美耐皿椭圆形平盘

Item No. 型号	Size(cm) 规格(cm)	Case Pack 外箱装量	G.Weight 外箱毛重	Meas.(cm) 外箱体积(cm)
B129	40.7x28.1x2.9			
B130	45.7x32.1x3.2	12pcs	14kgs	47x33x21
B131	50.8x36.2x3.5	12pcs	18kgs	51x37x21
B132	55.9x40.3x3.8	8pcs	16kgs	56x41x16



MELAMINE DINNERWARE

美耐皿餐具

MELAMINE ROUND DEEP PLATE

美耐皿圆形深盘

Item No. 型号	Size(cm) 规格(cm)	Case Pack 外箱装量	G.Weight 外箱毛重	Meas.(cm) 外箱体积(cm)
B059	D17.8x2.8	72pcs	15kgs	37x37x19.5
B060	D19.1x3	72pcs	16kgs	40x40x19
B061	D20.3x3.2	64pcs	17kgs	42x42x18
B062	D22.9x3.6	48pcs	16kgs	47x47x16
B063	D24.1x3.7	36pcs	14.5kgs	50x25x23
B064	D26.7x4.1	36pcs	17kgs	55x28x23
B065	D27.9x4.4	24pcs	15kgs	56x29x19
B066	D30.5x4.7	24pcs	17kgs	31x31x33
B067	D33x5.1	18pcs	17kgs	34x34x29



MELAMINE SQUARE FLAT PLATE

美耐皿方形平盘

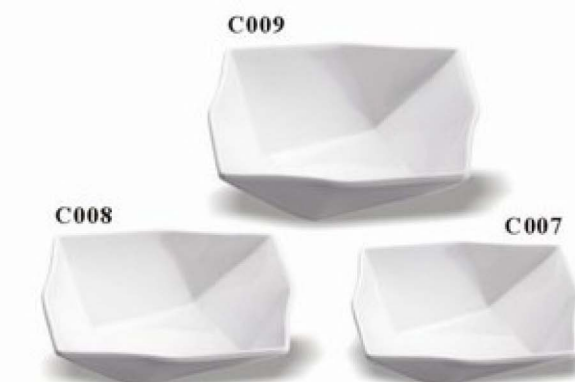
Item No. 型号	Size(cm) 规格(cm)	Case Pack 外箱装量	G.Weight 外箱毛重	Meas.(cm) 外箱体积(cm)
B078	15.3x15.3x1.9	96pcs	17kgs	32x32x21
B079	17.8x17.8x2.2	72pcs	17kgs	37x37x16
B080	20.3x20.3x2.4	48pcs	15.5kgs	42x21x22
B081	22.9x22.9x2.7	36pcs	15kgs	47x24x19
B082	25.4x25.4x3	36pcs	18kgs	52x27x21
B083	28x28x3.3	24pcs	17kgs	29x29x28
B084	30.5x30.5x3.6	18pcs	16kgs	31x31x25



MELAMINE SOUP PLATE

美耐皿汤盘

Item No. 型号	Size(cm) 规格(cm)	Case Pack 外箱装量	G.Weight 外箱毛重	Meas.(cm) 外箱体积(cm)
C007	15.3x15.3x4.2	96pcs	16kgs	39x39x23
C008	17.8x17.8x4.9	48pcs	14kgs	37.5x37.5x16
C009	19.1x19.1x5.9	48pcs	18kgs	41x41x19



MELAMINE DINNERWARE

美耐皿餐具



MELAMINE RECTANGULAR FLAT PLATE

美耐皿长方形平盘

Item No. 型号	Size(cm) 规格(cm)	Case Pack 外箱装量	G.Weight 外箱毛重	Meas.(cm) 外箱体积(cm)
B260	25.5x17.8x1.9	36pcs	15kgs	36x27x17
B261	33.2x23.1x2.4	18pcs	14kgs	34x24x19
B262	40.9x28.4x3	12pcs	17kgs	42x29x16



MELAMINE SQUARE FLAT PLATE

美耐皿方形平盘

Item No. 型号	Size(cm) 规格(cm)	Case Pack 外箱装量	G.Weight 外箱毛重	Meas.(cm) 外箱体积(cm)
C121	27.3x27.3x3.1	24pcs	17kgs	33x33x29
C122	30x30x3.4	18pcs	17kgs	34x34x24
C123	32.7x32.7x3.7	16pcs	18kgs	34x34x22



MELAMINE SQUARE FLAT PLATE

美耐皿方形平盘

Item No. 型号	Size(cm) 规格(cm)	Case Pack 外箱装量	G.Weight 外箱毛重	Meas.(cm) 外箱体积(cm)
B103	18.1x18.1x2.6	36pcs	15kgs	37x18x22
B104	20.6x20.6x2.8	32pcs	17kgs	41x21x23
B105	23.2x23.2x2.4	24pcs	17kgs	46x24x20



MELAMINE DINNERWARE

美耐皿餐具



MELAMINE SQUARE FLAT PLATE

美耐皿方形平盘

Item No. 型号	Size(cm) 规格(cm)	Case Pack 外箱装量	G.Weight 外箱毛重	Meas.(cm) 外箱体积(cm)
B342	16.5x16.5x2	96pcs	18kgs	35x35x20
B343	17.8x17.8x2.1	96pcs	21kgs	37x37x21
B344	20.3x20.3x2.3	48pcs	14.5kgs	41x20x22
B345	22.9x22.9x2.6	36pcs	15kgs	46x23x20
B346	25.4x25.4x2.8	36pcs	18kgs	52x25x21



MELAMINE RECTANGULAR FLAT PLATE

美耐皿长方形平盘

Item No. 型号	Size(cm) 规格(cm)	Case Pack 外箱装量	G.Weight 外箱毛重	Meas.(cm) 外箱体积(cm)
B160	35.5x27x4.2	12pcs	16kgs	35x27x33
B161	38.5x29.5x4.5	10pcs	17kgs	39x30x30
B162	43.6x33.4x5.1	6pcs	17kgs	44.5x33.5x22



MELAMINE SQUARE FLAT PLATE

美耐皿方形平盘

Item No. 型号	Size(cm) 规格(cm)	Case Pack 外箱装量	G.Weight 外箱毛重	Meas.(cm) 外箱体积(cm)
B163	30.5x30.5x3.6	12pcs	15kgs	31x31x28
B164	35.6x35.6x4.2	8pcs	15kgs	36x36x20
B165	40.5x40.5x4.8	6pcs	16kgs	40x40x17



MELAMINE DINNERWARE

美耐皿餐具

MELAMINE SQUARE FLAT PLATE

美耐皿方形平盘

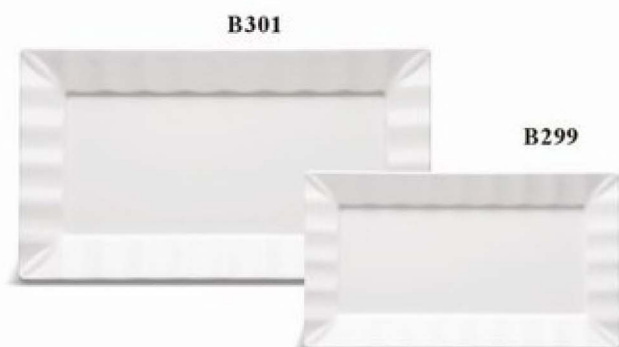
Item No. 型号	Size(cm) 规格(cm)	Case Pack 外箱装量	G.Weight 外箱毛重	Meas.(cm) 外箱体积(cm)
B293	17.8x17.8x2	72pcs	21kgs	37x37x22
B294	20.3x20.3x2.2	36pcs	15kgs	41x20x22
B295	22.9x22.9x2.4	36pcs	20kgs	47x23x25
B296	25.4x25.4x2.6	24pcs	18kgs	26x26x33
B297	27.9x27.9x2.8	16pcs	15kgs	29x29x25
B298	30.5x30.5x3	18pcs	18kgs	30x30x24



MELAMINE RECTANGULAR FLAT PLATE

美耐皿长方形平盘

Item No. 型号	Size(cm) 规格(cm)	Case Pack 外箱装量	G.Weight 外箱毛重	Meas.(cm) 外箱体积(cm)
B299	28x16x2	36pcs	15kgs	33x28x20
B300	30.7x17.5x2.1	36pcs	19kgs	36x31x22
B301	33x18.8x2.2	24pcs	16kgs	33x19x31



MELAMINE PLATE

美耐皿碟子

Item No. 型号	Size(cm) 规格(cm)	Case Pack 外箱装量	G.Weight 外箱毛重	Meas.(cm) 外箱体积(cm)
B091	13.5x9x1.8	192pcs	16kgs	39x28x16
B092	18.3x12x2.1	144pcs	19kgs	38x37x18
B093	20x13x2.1	96pcs	17kgs	42x28x19
B094	21.8x13.5x2.3	72pcs	16kgs	28x23x28
B095	23x15x2.4	72pcs	19kgs	47x31x17
B096	24x16x2.4	48pcs	15kgs	34x25x22



MELAMINE DINNERWARE

美耐皿餐具

MELAMINE SQUARE FLAT PLATE

美耐皿方形平盘

Item No. 型号	Size(cm) 规格(cm)	Case Pack 外箱装量	G.Weight 外箱毛重	Meas.(cm) 外箱体积(cm)
B302	17.8x17.8x2.1	48pcs	15kgs	37x18x28
B303	20.3x20.3x2.3	36pcs	16.5kgs	42x21x24
B304	22.9x22.9x2.5	24pcs	15kgs	46x24x18
B305	25.4x25.4x2.7	18pcs	15kgs	26x26x28
B306	27.9x27.9x2.9	20pcs	17.5kgs	28x28x28
B307	30.5x30.5x3.1	18pcs	18kgs	30x30x24



MELAMINE RECTANGULAR FLAT PLATE

美耐皿长方形平盘

Item No. 型号	Size(cm) 规格(cm)	Case Pack 外箱装量	G.Weight 外箱毛重	Meas.(cm) 外箱体积(cm)
B308	27.9x16.3x1.9	36pcs	16kgs	34x28x19
B309	30.5x17.8x2	24pcs	14.5kgs	37x31x15
B310	33x19.3x2.2	24pcs	17kgs	39x33x16



MELAMINE RECTANGULAR FLAT PLATE

美耐皿长方形平盘

Item No. 型号	Size(cm) 规格(cm)	Case Pack 外箱装量	G.Weight 外箱毛重	Meas.(cm) 外箱体积(cm)
B100	14.2x10.3x2	144pcs	18kgs	33x30x25
B101	17.2x12.2x2.3	96pcs	18kgs	37x26x29
B102	21.5x14.5x2.8	48pcs	14kgs	46x31x19



MELAMINE DINNERWARE

美耐皿餐具

MELAMINE RECTANGULAR FLAT PLATE

美耐皿长方形平盘

Item No. 型号	Size(cm) 规格(cm)	Case Pack 外箱装量	G.Weight 外箱毛重	Meas.(cm) 外箱体积(cm)
B153	39.6x26.9x2.6	24pcs	18kgs	39x27x26
B154	44.9x32.5x3	12pcs	15kgs	47.5x35x19
B155	49.5x37.3x3.3	12pcs	20kgs	52x40x20.5



B154



B155



B153

MELAMINE RECTANGULAR FLAT PLATE

美耐皿长方形平盘

Item No. 型号	Size(cm) 规格(cm)	Case Pack 外箱装量	G.Weight 外箱毛重	Meas.(cm) 外箱体积(cm)
B275	25.8x16.4x2.7	24pcs	14kgs	34x26x23
B276	28x17.9x2.9	18pcs	14kgs	37x28x19
B277	30.6x19.6x3.2	16pcs	15kgs	41x32x19



B275

B277

B276

MELAMINE RECTANGULAR FLAT PLATE

美耐皿长方形平盘

Item No. 型号	Size(cm) 规格(cm)	Case Pack 外箱装量	G.Weight 外箱毛重	Meas.(cm) 外箱体积(cm)
B257	21.5x14.8x2.8	36pcs	15kgs	31x23x25
B258	23.9x16.4x3.1	32pcs	17kgs	34x25x24
B259	26.7x18.4x3.4	24pcs	16kgs	38x28x21



B257

B259

B258

MELAMINE DINNERWARE

美耐皿餐具

MELAMINE SQUARE FLAT PLATE

美耐皿方形平盘

Item No. 型号	Size(cm) 规格(cm)	Case Pack 外箱装量	G.Weight 外箱毛重	Meas.(cm) 外箱体积(cm)
B147	22.9x22.9x2	48pcs	16kgs	47x24x26
B148	25x25x2.2	36pcs	16kgs	52x26x22
B149	27x27x2.4	24pcs	14kgs	28x28x30
B150	30x30x2.6	24pcs	16kgs	31x31x33
B151	32.5x32.5x2.8	18pcs	15kgs	33x33x27
B152	35x35x3	14pcs	15kgs	36x36x24



B152



B151

B149

B147
B148
B150

MELAMINE FLAT PLATE

美耐皿平盘

Item No. 型号	Size(cm) 规格(cm)	Case Pack 外箱装量	G.Weight 外箱毛重	Meas.(cm) 外箱体积(cm)
B086	22.9x16.4x2.2	72pcs	18kgs	50x23x18.5
B087	25.4x18.1x2.5	48pcs	15.5kgs	38x26x19
B088	27.9x20x2.8	36pcs	15.5kgs	41x29x17
B089	30.5x21.8x3	24pcs	13kgs	31x23x20
B090	33x23.5x3.2	24pcs	15kgs	34.5x25x23



B090

B088

B086
B087
B089

MELAMINE FLAT PLATE

美耐皿平盘

Item No. 型号	Size(cm) 规格(cm)	Case Pack 外箱装量	G.Weight 外箱毛重	Meas.(cm) 外箱体积(cm)
B142	20x12.6x3.3	96pcs	17kgs	42x40x23
B143	23.4x14.8x3.5	48pcs	14kgs	48x32x19
B144	26.9x17x3.6	36pcs	14.5kgs	37x28x29
B145	30x19x3.8	36pcs	17kgs	40x31x30
B146	32.5x20.5x4	24pcs	15kgs	43x34x22



B146

B144

B142
B143
B145



MELAMINE DINNERWARE

美耐皿餐具

MELAMINE ROUND FLAT PLATE

美耐皿圆形平盘

Item No. 型号	Size(cm) 规格(cm)	Case Pack 外箱装量	G.Weight 外箱毛重	Meas.(cm) 外箱体积(cm)
B133	D17.8x2.6	96pcs	18kgs	37x37x21
B134	D20.7x3.1	48pcs	14.5kgs	42x21x25
B135	D23.7x3.5	36pcs	15kgs	49x25x24
B136	D26.4x3.7	24pcs	14kgs	26x26x32
B137	D28.4x4.2	24pcs	17kgs	58x30x20
B138	D30.4x4.5	18pcs	16kgs	30x30x29
B139	D33.3x4.9			
B140	D36.4x5.4	10pcs	16kgs	38x38x23
B141	D39.5x5.8	8pcs	16kgs	40x40x19



MELAMINE FLAT PLATE

美耐皿平盘

Item No. 型号	Size(cm) 规格(cm)	Case Pack 外箱装量	G.Weight 外箱毛重	Meas.(cm) 外箱体积(cm)
B156	22.7x22.2x3.5	36pcs	17kgs	46x24x32
B157	27.8x27.1x3.8	18pcs	15kgs	28x28x35
B158	33.5x32.7x4.1	12pcs	15kgs	34x34x26
B159	38.4x37.4x4.4	10pcs	17kgs	39x39x25
B268	11.4x11.2x2.1	216pcs	18kgs	36x36x25
B269	15.3x14.9x2.9	72pcs	13kgs	32x32x25
B270	17.8x17.4x3.2	72pcs	17kgs	37x37x28
B271	20.3x19.8x3.3	48pcs	16kgs	40x21x29
B272	25.4x24.8x3.6	24pcs	14kgs	53x27x23
B273	30.5x29.8x3.9	18pcs	17kgs	32x32x32
B274	35.6x34.7x4.2	12pcs	16kgs	37x37x23



MELAMINE DINNERWARE

美耐皿餐具

MELAMINE FLAT PLATE

美耐皿平盘

Item No. 型号	Size(cm) 规格(cm)	Case Pack 外箱装量	G.Weight 外箱毛重	Meas.(cm) 外箱体积(cm)
B177	20.3x20.3x2.3	64pcs	17kgs	43x43x18
B178	25.4x25.3x2.5	36pcs	16kgs	52x26x23
B179	30.5x30.4x2.9	24pcs	18kgs	32x32x33
B180	35.6x35.5x3.4	12pcs	14kgs	37x37x21
B181	40.6x40.5x3.6	10pcs	16kgs	42x42x20



MELAMINE OVAL FLAT PLATE

美耐皿椭圆形平盘

Item No. 型号	Size(cm) 规格(cm)	Case Pack 外箱装量	G.Weight 外箱毛重	Meas.(cm) 外箱体积(cm)
B169	22.9x17.2x2.2	72pcs	17kgs	48x36x21
B170	25.4x19.1x2.4	48pcs	16kgs	40x26x27
B171	28x21x2.5	36pcs	15kgs	43x29x22
B172	30.5x23x2.5	36pcs	17kgs	48x31x23
B173	33x24.9x2.7	24pcs	16kgs	52x34x17
B174	35.6x26.8x2.8	18pcs	14kgs	37x28x25
B175	40.6x30.6x3.2	12pcs	14kgs	42x32x21
B176	45.7x34.4x3.6	10pcs	16kgs	47x35x19



MELAMINE DINNERWARE

美耐皿餐具

MELAMINE ROUND FLAT PLATE

美耐皿圆形平盘

Item No. 型号	Size(cm) 规格(cm)	Case Pack 外箱装量	G.Weight 外箱毛重	Meas.(cm) 外箱体积(cm)
B241	D15.3x2.5	96pcs	15kgs	32x32x26
B242	D17.8x2.7	72pcs	16kgs	37x37x23
B243	D20.3x3	48pcs	15kgs	42x42x17
B244	D22.9x3.2	36pcs	16kgs	48x24x26
B245	D25.4X3.5	24pcs	14kgs	53x27x21
B246	D27.9X3.7	18pcs	14kgs	29x29x30
B247	D30.5X4	16pcs	15.5kgs	32x32x23
B248	D33X4.2	12pcs	14.5kgs	34x34x24
B249	D35.6X4.5	10pcs	15kgs	37x37x23



B241
B243
B244
B245
B248

MELAMINE ROUND FLAT PLATE

美耐皿圆形平盘

Item No. 型号	Size(cm) 规格(cm)	Case Pack 外箱装量	G.Weight 外箱毛重	Meas.(cm) 外箱体积(cm)
B363	22.8x16x2.1	96pcs	21kgs	47x33x21
B364				
B365				
B366	30x21.5x2.3			44x30x19
B367				
B368				
B369	35.8x28.1x2.6	18pcs	15.5kgs	36x28x21.5



MELAMINE DINNERWARE

美耐皿餐具

MELAMINE ROUND FROSTED PLATE

美耐皿圆形磨砂碟

Item No. 型号	Size(cm) 规格(cm)	Case Pack 外箱装量	G.Weight 外箱毛重	Meas.(cm) 外箱体积(cm)
B207	D12.7x2	120pcs	14kgs	41x26x17
B208	D15.8x2.2	72pcs	14kgs	33x33x17
B209	D17.8x2.5	112pcs	21kgs	37x37x23
B210	D20.3x2.6	72pcs	15kgs	42x42x18
B211	D21.7x2.7	72pcs	19kgs	44x44x19
B212	D25.4x3	36pcs	14kgs	52x26x20
B213	D28x3.3	24pcs	13kgs	29x29x28
B214	D30.5x3.6	24pcs	15kgs	31x31x30
B215	D33x3.7	18pcs	14kgs	34.5x34.5x24
B216	D35.6x3.8	18pcs	16kgs	36x36x23
B217	D40.7x4.1	12pcs	16kgs	41x41x18



B207
B209
B210
B213
B214
B215

MELAMINE SQUARE FROSTED PLATE

美耐皿方形磨砂碟

Item No. 型号	Size(cm) 规格(cm)	Case Pack 外箱装量	G.Weight 外箱毛重	Meas.(cm) 外箱体积(cm)
B199	20.3x20.3x2.6	48pcs	14.5kgs	42x42x15
B200	22.9x22.9x2.9	36pcs	15kgs	46x22x23
B201	25.4x25.4x3.2	36pcs	19kgs	52x25x26
B202	28x28x3.6	24pcs	16kgs	56x27x19
B203	30.5x30.5x3.9			
B204	33x33x4.1	18pcs	15kgs	32x32x30
B205	35.6x35.6x4.4			
B206	40.7x40.7x4.9	12pcs	16kgs	40x40x22



B201
B203
B205

B199

MELAMINE DINNERWARE

美耐皿餐具

MELAMINE ROUND FROSTED PLATE

美耐皿圆形磨砂碟

Item No. 型号	Size(cm) 规格(cm)	Case Pack 外箱装量	G.Weight 外箱毛重	Meas.(cm) 外箱体积(cm)
B400	D20.1x2.8	96pcs	21kgs	41x41x21
B401	D22.3x3			45.5x21x23.5
B402	D25.6x3.3	48pcs	20kgs	52x26x25
B405	D32.3x4			32.5x32.5x29.5
B407	D39.8x4.8	12pcs	17kgs	39x39x17



MELAMINE TRIANGLE FROSTED PLATE

美耐皿三角形磨砂碟

Item No. 型号	Size(cm) 规格(cm)	Case Pack 外箱装量	G.Weight 外箱毛重	Meas.(cm) 外箱体积(cm)
B050	D15.3x15.1	96pcs	14.5kgs	32x32x22
B051	D17.9x17.6	72pcs	15kgs	37x37x19
B052	D20.4x20.1	48pcs	13kgs	42x21x25
B053	D23x22.7	48pcs	17kgs	47x24x27.5
B054	D25.5x25.2	36pcs	16kgs	51x26x22
B055	D28.1x27.7	18pcs	12kgs	29x29x25
B056	D30.6x30.2	18pcs	14kgs	31x31x26
B057	D33.2x32.8	18pcs	16kgs	33x33x28
B058	D35.8x35.3	12pcs	13kgs	36x36x20



MELAMINE DINNERWARE

美耐皿餐具

MELAMINE ROUND FROSTED PLATE

美耐皿圆形磨砂碟

Item No. 型号	Size(cm) 规格(cm)	Case Pack 外箱装量	G.Weight 外箱毛重	Meas.(cm) 外箱体积(cm)
B381	D10.1x2.3			
B382	D12.1x2.7	252pcs	22.5kgs	37.5x37.5x23.5
B383	D14.1x3	120pcs	17kgs	29x29x25
B384	D15.6x3.1	96pcs	18kgs	32x32x21
B385	D16.6x3.3	72pcs	15.5kgs	33x33x18



MELAMINE ROUND FROSTED PLATE

美耐皿圆形磨砂碟

Item No. 型号	Size(cm) 规格(cm)	Case Pack 外箱装量	G.Weight 外箱毛重	Meas.(cm) 外箱体积(cm)
B416	D23.5x2.2	48pcs	14.5kgs	46.5x23x19
B417	D25.6x2.4	48pcs	18kgs	52x25x20
B418	D27.9x2.6	36pcs	17kgs	28x28x28



MELAMINE OVAL FROSTED PLATE

美耐皿椭圆形磨砂碟

Item No. 型号	Size(cm) 规格(cm)	Case Pack 外箱装量	G.Weight 外箱毛重	Meas.(cm) 外箱体积(cm)
B412	32.9x24.3x2.6	24pcs	14.5kgs	33x24x25
B413	35.6x26.1x2.8	24pcs	18kgs	36x26x27
B414	40x31x3.1	18pcs	19kgs	41.5x30x27



MELAMINE DINNERWARE

美耐皿餐具



MELAMINE ROUND DEEP PLATE

美耐皿圆形深盘

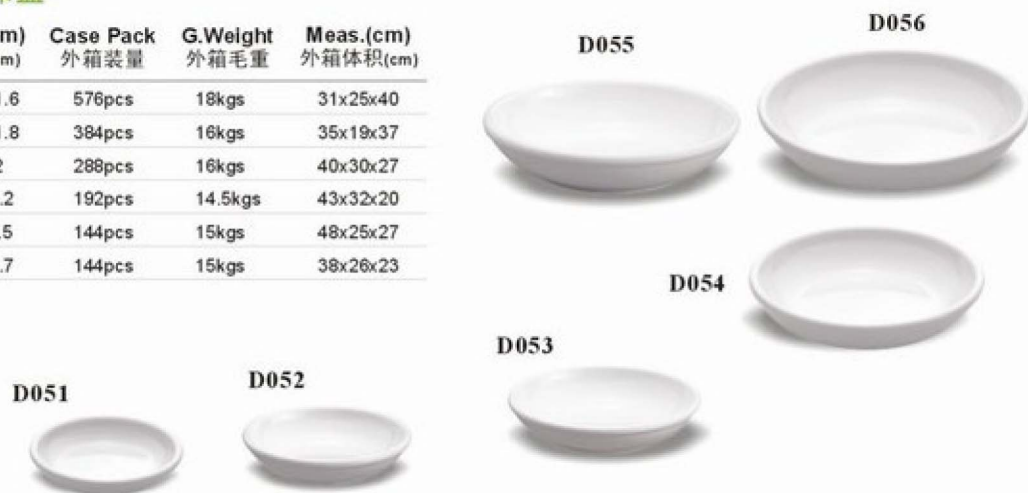
Item No. 型号	Size(cm) 规格(cm)	Case Pack 外箱装量	G.Weight 外箱毛重	Meas.(cm) 外箱体积(cm)
D109	D7.6x2.4	384pcs	17kgs	46x33x36
D110	D10.1x2.6	192pcs	15kgs	44x44x23
D111	D11.4x2.8	192pcs	17kgs	48x48x24
D112	D12.7x3	144pcs	16kgs	53x41x26
D113	D16.4x3.5	72pcs	16kgs	51x34x28
D114	D19x3.8	48pcs	14kgs	40x40x29



MELAMINE ROUND DEEP PLATE

美耐皿圆形深盘

Item No. 型号	Size(cm) 规格(cm)	Case Pack 外箱装量	G.Weight 外箱毛重	Meas.(cm) 外箱体积(cm)
D051	D7.1x1.6	576pcs	18kgs	31x25x40
D052	D8.1x1.8	384pcs	16kgs	35x19x37
D053	D9.1x2	288pcs	16kgs	40x30x27
D054	D10x2.2	192pcs	14.5kgs	43x32x20
D055	D11x2.5	144pcs	15kgs	48x25x27
D056	D12x2.7	144pcs	15kgs	38x26x23



MELAMINE ROUND DEEP PLATE

美耐皿圆形深盘

Item No. 型号	Size(cm) 规格(cm)	Case Pack 外箱装量	G.Weight 外箱毛重	Meas.(cm) 外箱体积(cm)
D155	D9.1x2.6	180pcs	11kgs	40x30x23
D156	D11.7x3	144pcs	14kgs	48x36x21
D157	D14.1x3.5	108pcs	17kgs	44x44x24.5



MELAMINE DINNERWARE

美耐皿餐具



MELAMINE SQUARE DEEP PLATE

美耐皿方形深盘

Item No. 型号	Size(cm) 规格(cm)	Case Pack 外箱装量	G.Weight 外箱毛重	Meas.(cm) 外箱体积(cm)
D147	23.9x23.9x6.1	16pcs	16kgs	51x51x22
D148	14x14x4.7	64pcs	17kgs	30x30x23



MELAMINE ROUND DEEP PLATE

美耐皿圆形深盘

Item No. 型号	Size(cm) 规格(cm)	Case Pack 外箱装量	G.Weight 外箱毛重	Meas.(cm) 外箱体积(cm)
B350	D22.9x4.7	48pcs	17kgs	46x46x20
B351	D25.4x5	36pcs	16.5kgs	51x25.5x32
B352	D27.9x5.4	16pcs	11.5kgs	28x28x28
B353	D30.5x5.7	18pcs	14kgs	30x30x30



MELAMINE ROUND DEEP PLATE

美耐皿圆形深盘

Item No. 型号	Size(cm) 规格(cm)	Case Pack 外箱装量	G.Weight 外箱毛重	Meas.(cm) 外箱体积(cm)
B263	18.1x16.1x3.7	60pcs	12kgs	48x34x18
B264	19.4x17.2x4.1	48pcs	12kgs	36x36x22
B265	20.7x18.4x4.4	48pcs	13kgs	37.5x37.5x23
B266	23.3x20.7x4.7	48pcs	17kgs	44x44x26
B267	24.1x27.2x5	36pcs	17.5kgs	51x51x22



MELAMINE DINNERWARE

美耐皿餐具

MELAMINE FROSTED PLATE

美耐皿磨砂碟

Item No. 型号	Size(cm) 规格(cm)	Case Pack 外箱装量	G.Weight 外箱毛重	Meas.(cm) 外箱体积(cm)
B394	18x11x2.8	144pcs	15.5kgs	37x34x21
B395	20x12.2x3.4	108pcs	17kgs	41x38x20
B396	23.7x14.8x3.3	72pcs	17kgs	47x24x27
B397	27x17x3.4	60pcs	18kgs	53x27x23
B398	30x19x3.4	48pcs	18kgs	39x30.5x27



MELAMINE OVAL PLATE

美耐皿椭圆形盘

Item No. 型号	Size(cm) 规格(cm)	Case Pack 外箱装量	G.Weight 外箱毛重	Meas.(cm) 外箱体积(cm)
B195	17.8x11.1x3	72pcs	13kgs	37x24x25
B196	20.3x12.7x3.4	48pcs	13kgs	42x27x20
B197	22.9x14.3x3.8	48pcs	18kgs	47x29x21.5



MELAMINE FROSTED PLATE

美耐皿磨砂碟

Item No. 型号	Size(cm) 规格(cm)	Case Pack 外箱装量	G.Weight 外箱毛重	Meas.(cm) 外箱体积(cm)
B386	D19.6x4	60pcs	19kgs	40x40x27
B390	D30.1x5.6	12pcs	14kgs	30x30x32
B391	D33.1x6	12pcs	16.5kgs	33x33x33



MELAMINE FROSTED PLATE

美耐皿磨砂碟

Item No. 型号	Size(cm) 规格(cm)	Case Pack 外箱装量	G.Weight 外箱毛重	Meas.(cm) 外箱体积(cm)
C185	D36.6x10.5	6pcs	15kgs	36x36x27



MELAMINE DINNERWARE

美耐皿餐具

MELAMINE SQUARE DEEP PLATE

美耐皿方形深盘

Item No. 型号	Size(cm) 规格(cm)	Case Pack 外箱装量	G.Weight 外箱毛重	Meas.(cm) 外箱体积(cm)
D074	12.9x9.4x5.3	108pcs	14kgs	41x30x20
D075	10.4x10.4x3.3	216pcs	16kgs	32x32x20
D076	12.6x12.6x3.6	108pcs	15kgs	40x26x23
D086	9.7x9.7x4.2	192pcs	17kgs	42x31x40
D150	8.2x8.2x4.2	216pcs	15kgs	37x28x29



MELAMINE FROSTED PLATE

美耐皿磨砂碟

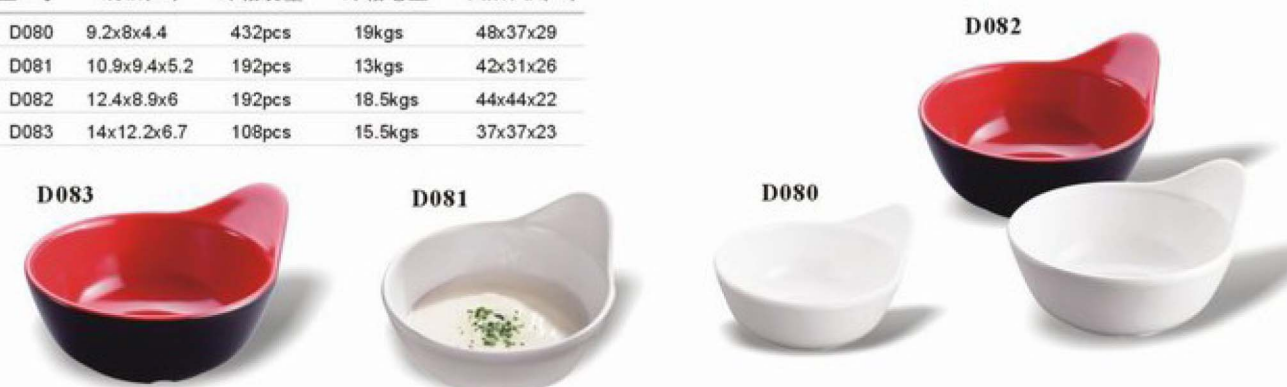
Item No. 型号	Size(cm) 规格(cm)	Case Pack 外箱装量	G.Weight 外箱毛重	Meas.(cm) 外箱体积(cm)
C186	9.3x9.3x2.7	360pcs	17kgs	37.5x37.5x23.5
C187	11.3x11.3x3	288pcs	21.5kgs	49.5x37x21.5
C188	13.3x13.3x3.5	120pcs	16kgs	29x29x25
C189	15.1x15.1x4	96pcs	18kgs	31x31x22



MELAMINE ROUND DEEP PLATE

美耐皿圆形深盘

Item No. 型号	Size(cm) 规格(cm)	Case Pack 外箱装量	G.Weight 外箱毛重	Meas.(cm) 外箱体积(cm)
D080	9.2x8x4.4	432pcs	19kgs	48x37x29
D081	10.9x9.4x5.2	192pcs	13kgs	42x31x26
D082	12.4x8.9x6	192pcs	18.5kgs	44x44x22
D083	14x12.2x6.7	108pcs	15.5kgs	37x37x23



MELAMINE DINNERWARE

美耐皿餐具

MELAMINE ROUND DEEP PLATE

美耐皿圆形深盘

Item No. 型号	Size(cm) 规格(cm)	Case Pack 外箱装量	G.Weight 外箱毛重	Meas.(cm) 外箱体积(cm)
D085	10.3x6.7x2.6	288pcs	19.5kgs	33.5x24x38
D089	11.6x9.2x4.8	108pcs	13kgs	36x28x19
D090	10.1x8x4.2	160pcs	13kgs	31x25x40
D104	12.9x11.7x5.7	72pcs	12.5kgs	40x40x15



MELAMINE ROUND DEEP PLATE

美耐皿圆形深盘

Item No. 型号	Size(cm) 规格(cm)	Case Pack 外箱装量	G.Weight 外箱毛重	Meas.(cm) 外箱体积(cm)
D102	12x11.9x5.2	108pcs	15.5kgs	37.5x37.5x23
C179	D14.4x5	108pcs	19kgs	45x45x22
C203	11.5x11.5x3.7	162pcs	14.5kgs	34.5x34.5x24



MELAMINE SAUCE PLATE

美耐皿酱油碟

Item No. 型号	Size(cm) 规格(cm)	Case Pack 外箱装量	G.Weight 外箱毛重	Meas.(cm) 外箱体积(cm)
D061	9.3x7x3	192pcs	18kgs	29x29x22.5
D071	9.4x6.3x2.6	216pcs	15.5kgs	42x22x30
D072	8.9x8.9x2	192pcs	14kgs	39x27x42
D084	9.9x6.9x3.2	192pcs	18kgs	40x30x23.5



MELAMINE DINNERWARE

美耐皿餐具

MELAMINE SAUCE PLATE

美耐皿酱油碟

Item No. 型号	Size(cm) 规格(cm)	Case Pack 外箱装量	G.Weight 外箱毛重	Meas.(cm) 外箱体积(cm)
D070	14.1x8.9x2.9	160pcs	21kgs	41x29x25
D077	20x11x6.1	72pcs	17kgs	47x41x44
D079	13.6x7.8x3	120pcs	15kgs	34x28x29



MELAMINE SAUCE PLATE

美耐皿酱油碟

Item No. 型号	Size(cm) 规格(cm)	Case Pack 外箱装量	G.Weight 外箱毛重	Meas.(cm) 外箱体积(cm)
D066	7.3x7.3x2.7			
D067	14.7x7.3x2.6	144pcs	19kgs	30x30x25
D068	22.3x7.2x2.5			



MELAMINE SAUCE PLATE

美耐皿酱油碟

Item No. 型号	Size(cm) 规格(cm)	Case Pack 外箱装量	G.Weight 外箱毛重	Meas.(cm) 外箱体积(cm)
D069	16.4x9.3x3.6			
D117	20.6x10.5x2.6	72pcs	17kgs	34x21x27
D118	30.7x10.5x2.6	48pcs	17kgs	32x31x18



MELAMINE DINNERWARE

美耐皿餐具

MELAMINE DEEP PLATE

美耐皿深盘

Item No. 型号	Size(cm) 规格(cm)	Case Pack 外箱装量	G.Weight 外箱毛重	Meas.(cm) 外箱体积(cm)
D096	18.8x17x3.8	72pcs	14.5kgs	33x33x30
D097	22.2x20.1x4.3	48pcs	14.5kgs	39x39x24
D098	27.9x25.4x5.2	36pcs	18kgs	50x50x22



D097



D096



D098

MELAMINE DEEP PLATE

美耐皿深盘

Item No. 型号	Size(cm) 规格(cm)	Case Pack 外箱装量	G.Weight 外箱毛重	Meas.(cm) 外箱体积(cm)
D078	17.8x16.7x3.9	72pcs	17kgs	34x34x34



D078

MELAMINE DEEP PLATE

美耐皿深盘

Item No. 型号	Size(cm) 规格(cm)	Case Pack 外箱装量	G.Weight 外箱毛重	Meas.(cm) 外箱体积(cm)
D087	11.3x7.1x2			
D088	13.1x8.2x2			



D087

D088

MELAMINE FLAT PLATE

美耐皿平碟

Item No. 型号	Size(cm) 规格(cm)	Case Pack 外箱装量	G.Weight 外箱毛重	Meas.(cm) 外箱体积(cm)
D058	10.3x10x3.8	144pcs	14kgs	42x21x24.5
D059	14.2x13.8x4.5	72pcs	15kgs	29x29x26
D060	16.6x16.2x5			



D058



D059



D060

MELAMINE DINNERWARE

美耐皿餐具

MELAMINE ROUND DEEP PLATE

美耐皿圆形深盘

Item No. 型号	Size(cm) 规格(cm)	Case Pack 外箱装量	G.Weight 外箱毛重	Meas.(cm) 外箱体积(cm)
D130	31.8x20.6x2.6	24pcs	14kgs	34x34x20
D131	20.6x16.5x2.6	48pcs	14kgs	34x34x20
D132	19.2x12.4x2.6	112pcs	22.5kgs	42x42x22
D133	13.6x10.1x2.6			

D130



D131



D132



D133



MELAMINE ROUND DEEP PLATE

美耐皿圆形深盘

Item No. 型号	Size(cm) 规格(cm)	Case Pack 外箱装量	G.Weight 外箱毛重	Meas.(cm) 外箱体积(cm)
D128	17.1x10.8x3.3	108pcs	16.5kgs	46x22.5x22
D129	21.5x13.7x3.3	72pcs	17kgs	28x28x30

D129



D128



MELAMINE ROUND DEEP PLATE

美耐皿圆形深盘

Item No. 型号	Size(cm) 规格(cm)	Case Pack 外箱装量	G.Weight 外箱毛重	Meas.(cm) 外箱体积(cm)
D034	D25.4x2.8	24pcs	14kgs	52x26x18
D035	D30.5x3.4	18pcs	16kgs	34x34x29
D036	D35.6x3.8	12pcs	16kgs	39x39x24
D037	D30.5x3.4	18pcs	17kgs	34x34x28
D038	D35.6x3.8	12pcs	16kgs	40x40x26

D038



D037



D036



D035



D034



MELAMINE DINNERWARE

美耐皿餐具



MELAMINE FLAT PLATE

美耐皿平盘

Item No. 型号	Size(cm) 规格(cm)	Case Pack 外箱装量	G.Weight 外箱毛重	Meas.(cm) 外箱体积(cm)
B278	20x16.4x2	96pcs	12kgs	33x33x45
B279	24.9x20.5x2.5	72pcs	17kgs	42x41x35
B280	29.8x24.5x3	48pcs	18.5kgs	51x51x25



MELAMINE DEEP PLATE

美耐皿深盘

Item No. 型号	Size(cm) 规格(cm)	Case Pack 外箱装量	G.Weight 外箱毛重	Meas.(cm) 外箱体积(cm)
B281	20.4x20x3.2	48pcs	16kgs	41x20x30
B282	25.9x25.3x4.1	24pcs	16kgs	53x27x21
B283	32.8x32.1x5.2	16pcs	15kgs	34x34x29



MELAMINE SQUARE DEEP PLATE

美耐皿方形深盘

Item No. 型号	Size(cm) 规格(cm)	Case Pack 外箱装量	G.Weight 外箱毛重	Meas.(cm) 外箱体积(cm)
C118	19.6x19.6x5.7	36pcs	17kgs	40x40x23
C119	22.2x22.2x6.5	24pcs	16kgs	48x24x33
C120	24.8x24.8x7.3	18pcs	17kgs	52x26x27



MELAMINE DINNERWARE

美耐皿餐具



MELAMINE FLAT PLATE

美耐皿平盘

Item No. 型号	Size(cm) 规格(cm)	Case Pack 外箱装量	G.Weight 外箱毛重	Meas.(cm) 外箱体积(cm)
D152	29.8x18.1x3.2	48pcs	16kgs	36x32x32
D153	33.4x19.2x3.3	36pcs	15kgs	38x35x35
D154	37x20.2x3.5	24pcs	14kgs	41x39x21



MELAMINE DEEP PLATE

美耐皿深盘

Item No. 型号	Size(cm) 规格(cm)	Case Pack 外箱装量	G.Weight 外箱毛重	Meas.(cm) 外箱体积(cm)
D136	34.3x17.2x13.3	24pcs	16kgs	35x34x28
D137	37.1x18.7x15.6	12pcs	12kgs	39x37x23
D138	40x20.3x17.9	16pcs	17kgs	41x41x26



MELAMINE DEEP PLATE

美耐皿深盘

Item No. 型号	Size(cm) 规格(cm)	Case Pack 外箱装量	G.Weight 外箱毛重	Meas.(cm) 外箱体积(cm)
D048	25.8x12.7x4.8	48pcs	16kgs	53x27x26
D049	18.6x9.8x3.8	96pcs	17kgs	39x31x29
D050	13.1x7.2x3.6	288pcs	21kgs	51x23x33
D126	32.2x15.9x6	18pcs	11kgs	33x33x28
D127	37.3x18.4x7	18pcs	13.5kgs	37x37x23



MELAMINE DINNERWARE

美耐皿餐具

MELAMINE RECTANGULAR FLAT PLATE

美耐皿长方形平盘

Item No. 型号	Size(cm) 规格(cm)	Case Pack 外箱装量	G.Weight 外箱毛重	Meas.(cm) 外箱体积(cm)
D124	29.8x13.7x1.4	24pcs	15kgs	31x29x19
D134	35.8x13x1.8	24pcs	16kgs	37x28x24
B221	28.7x12.2x2.4	24pcs	14kgs	30x26x23
B360	35.6x14.3x2.2	36pcs	17kgs	35x28x23



MELAMINE RECTANGULAR FLAT PLATE

美耐皿长方形平盘

Item No. 型号	Size(cm) 规格(cm)	Case Pack 外箱装量	G.Weight 外箱毛重	Meas.(cm) 外箱体积(cm)
D119	32x15.2x1.4	32pcs	17kgs	33x32x17
D123	30.5x19.7x2.4	24pcs	16kgs	41x31x17
D144	31.1x16.4x1.4	36pcs	17kgs	34x32x26
B340	41.1x16.2x3.1	18pcs	17kgs	42x34x19



MELAMINE DINNERWARE

美耐皿餐具

MELAMINE RECTANGULAR FLAT PLATE

美耐皿长方形平盘

Item No. 型号	Size(cm) 规格(cm)	Case Pack 外箱装量	G.Weight 外箱毛重	Meas.(cm) 外箱体积(cm)
D101	36.4x5.9x3.3			
D121	25.6x14.9x2.3	36pcs	15kgs	31x27x25
D122	29.2x15.1x2.4	24pcs	14kgs	31x30x16



MELAMINE FROSTED PLATE

美耐皿磨砂碟

Item No. 型号	Size(cm) 规格(cm)	Case Pack 外箱装量	G.Weight 外箱毛重	Meas.(cm) 外箱体积(cm)
B218	21x13.2x2.7	72pcs	16kgs	41x21x32
B219	20.1x14x2.3	64pcs	17kgs	42x30x23
B220	22.6x9.7x3	96pcs	18.5kgs	41x23x30
D120	25.4x15.5x2.5	96pcs	14.5kgs	32x32x22



MELAMINE DINNERWARE

美耐皿餐具



MELAMINE FAST FOOD TRAY

美耐皿餐盘

Item No. 型号	Size(cm) 规格(cm)	Case Pack 外箱装量	G.Weight 外箱毛重	Meas.(cm) 外箱体积(cm)
B183	D21.6x4.9	36pcs	16kgs	45x45x20
B184	D22.9x3	36pcs	13kgs	47x24x19
B185	32x29.2x3.2	24pcs	16kgs	33x31x30
B186	29.2x26.7x3.2	24pcs	13.5kgs	29x27x30
B324	22.6x18.1x2.7	48pcs	16kgs	45x37x21



Item No. 型号	Size(cm) 规格(cm)	Case Pack 外箱装量	G.Weight 外箱毛重	Meas.(cm) 外箱体积(cm)
B238	25.4x16.6x2.5	48pcs	14.5kgs	32x27x24
B239	30.5x19.9x2.8	36pcs	17kgs	38x31x20
B240	35.6x23.3x3.1	24pcs	16.5kgs	49x27.5x33.5



Item No. 型号	Size(cm) 规格(cm)	Case Pack 外箱装量	G.Weight 外箱毛重	Meas.(cm) 外箱体积(cm)
B334	17.7x10x2.7	96pcs	16kgs	36x31x24
B335	20.4x11.4x3.1	72pcs	17kgs	42x24x30
B336	22.9x12.8x3.4	60pcs	18kgs	40x23x38



MELAMINE DINNERWARE

美耐皿餐具



MELAMINE FAST FOOD TRAY

美耐皿餐盘

Item No. 型号	Size(cm) 规格(cm)	Case Pack 外箱装量	G.Weight 外箱毛重	Meas.(cm) 外箱体积(cm)
D099	21.9x15x3.1	72pcs	17kgs	45x31x27
D100	25.5x17.5x3.2	36pcs	16kgs	37x27x23



MELAMINE FAST FOOD TRAY

美耐皿餐盘

Item No. 型号	Size(cm) 规格(cm)	Case Pack 外箱装量	G.Weight 外箱毛重	Meas.(cm) 外箱体积(cm)
D039	D27.9x2.5	24pcs	14.5kgs	29x29x26
D040	30.5x24.7x2.9	32pcs	17.5kgs	51x31x17
D115	D24.5x2.8	48pcs	14kgs	50x25x28
D116	D24.5x2.8	72pcs	19kgs	50x50x22
D143	D25.4x2.7	48pcs	15kgs	52x25x19



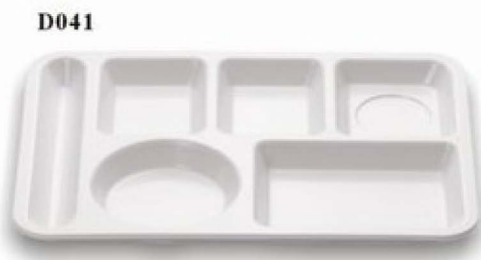
MELAMINE DINNERWARE

美耐皿餐具

MELAMINE FAST FOOD TRAY

美耐皿餐盘

Item No. 型号	Size(cm) 规格(cm)	Case Pack 外箱装量	G.Weight 外箱毛重	Meas.(cm) 外箱体积(cm)
D041	35.6x25.3x2.4	18pcs	15kgs	39x29x28
D042	40.6x26.4x2.9	12pcs	13kgs	42x27x19



MELAMINE FAST FOOD TRAY

美耐皿餐盘

Item No. 型号	Size(cm) 规格(cm)	Case Pack 外箱装量	G.Weight 外箱毛重	Meas.(cm) 外箱体积(cm)
D043	33x25.3x1.9	36pcs	16.5kgs	33x26x20
D044	39.4x28x2.4	24pcs	21kgs	39x28x21
D045	39.4x27.9x2.4			42.5x30.5x17
D046	44.5x32x2.2	18pcs	17kgs	48.5x35.5x17
D047	43.2x30x3.3	18pcs	18kgs	43x30x21



MELAMINE DINNERWARE

美耐皿餐具

MELAMINE CUP & SPOON

美耐皿杯子&汤匙



Item No. 型号	Size(cm) 规格(cm)	Case Pack 外箱装量	G.Weight 外箱毛重	Meas.(cm) 外箱体积(cm)
D011	7.8x8.4	144pcs	17kgs	50x34x34
D012	9.9x13.5	54pcs	15kgs	32x32x37
D013	7.4x10.9	144pcs	18kgs	47x32x39
D014	8.5x11.8	72pcs	15kgs	48x33x38
D015	7.2x8.2	144pcs	15.5kgs	44x31x39
D016	6.2x7.8	192pcs	18kgs	52x40x32
D017	7.3x9.2	144pcs	17kgs	45x32x46
D018	7.3x8.3	144pcs	19kgs	47x32x44
D091	8.1x14.2	100pcs	18kgs	40x40x37

Item No. 型号	Size(cm) 规格(cm)	Case Pack 外箱装量	G.Weight 外箱毛重	Meas.(cm) 外箱体积(cm)
D003	12.8x4.3x2.7	480pcs	11kgs	35x19x37
D004	15.2x4.5x3.1	480pcs	17kgs	43x31x19
D006	16.5x5.3x3.6	560pcs	20kgs	43x31x21
D007	15.6x4.9x2.7	448pcs	20kgs	43x31x21
D009	14.6x4.1x2.8	560pcs	16kgs	43x31x21
D093	8.3x3x3.9			
D095	20.8x5.7x4.5	384pcs	26kgs	42.5x31.5x40
D107	14.5x4.1			
D108	14.3x4x5			



Item No. 型号	Size(cm) 规格(cm)	Case Pack 外箱装量	G.Weight 外箱毛重	Meas.(cm) 外箱体积(cm)
D001	25.4x6.6x4.5	150pcs	12.5kgs	31x27x25
D008	26.6x8.8x6.2			
D010	20.9x6.3x4.1	248pcs	12kgs	31x27x25

MELAMINE DINNERWARE

美耐皿餐具

MELAMINE ROUND BOWL

美耐皿圆形碗

Item No. 型号	Size(cm) 规格(cm)	Case Pack 外箱装量	G.Weight 外箱毛重	Meas.(cm) 外箱体积(cm)
C110	D10.2x5.4	144pcs	15kgs	43x34x27
C111	D11.4x6.1	108pcs	15kgs	37x37x29.5
C112	D12.7x6.8	72pcs	14kgs	40x40x23
C113	D15.3x7.3	72pcs	19kgs	46.5x46.5x23



MELAMINE SWIRL ROUND BOWL

美耐皿螺纹圆形碗

Item No. 型号	Size(cm) 规格(cm)	Case Pack 外箱装量	G.Weight 外箱毛重	Meas.(cm) 外箱体积(cm)
C158	D11.4x5.6			
C159	D12.7x6	108pcs	19kgs	53x40x25
C160	D15.2x6.7	72pcs	18kgs	46x46x19
C161	D17.8x7.4	48pcs	18kgs	36x36x28



MELAMINE ROUND BOWL

美耐皿圆形碗

Item No. 型号	Size(cm) 规格(cm)	Case Pack 外箱装量	G.Weight 外箱毛重	Meas.(cm) 外箱体积(cm)
C105	D11.4x5.1	96pcs	13kgs	49x37x25
C106	D14x5.6	72pcs	15kgs	44x44x26
C107	D16.5x6.1	48pcs	14kgs	35x35x41
C109	D21.6x7.1	36pcs	18kgs	45x45x36



MELAMINE DINNERWARE

美耐皿餐具

MELAMINE SWIRL ROUND BOWL

美耐皿螺旋圆形碗

Item No. 型号	Size(cm) 规格(cm)	Case Pack 外箱装量	G.Weight 外箱毛重	Meas.(cm) 外箱体积(cm)
C086	D11.4x5.5	108pcs	15kgs	37x37x23
C087	D13.3x6	72pcs	15kgs	28x28x34
C088	D15.4x6.5	48pcs	13kgs	33x33x25
C089	D17.8x6.9	48pcs	17kgs	37x37x25
C090	D20.3x7.4	36pcs	17kgs	41x41x21
C091	D22.9x7.9	36pcs	21kgs	48x48x19
C092	D25.4x8.5	24pcs	18kgs	52x26x25

C091



C092



C086



C087
C088
C089
C090

Item No. 型号	Size(cm) 规格(cm)	Case Pack 外箱装量	G.Weight 外箱毛重	Meas.(cm) 外箱体积(cm)
C075	D15.3x5.8	72pcs	17.5kgs	32x32x37
C076	D16.8x6.5	48pcs	15kgs	36x36x28
C077	D18.5x7.2	36pcs	15kgs	39x39x25
C078	D20.5x7.9	32pcs	17kgs	43x43x25
C079	D22.9x8.6	32pcs	21kgs	48x48x24
C080	D25.4x9.3	24pcs	20kgs	52x52x22

C079



C075



C076
C077
C078
C080

Item No. 型号	Size(cm) 规格(cm)	Case Pack 外箱装量	G.Weight 外箱毛重	Meas.(cm) 外箱体积(cm)
C093	D15.6x8	48pcs	13kgs	33x33x38
C094	D18x8.6	48pcs	17kgs	37x37x37
C095	D20.6x9	36pcs	17kgs	43x43x30
C096	D23.2x9.5	24pcs	14kgs	48x48x24

C096



C095



C094



C093



MELAMINE DINNERWARE

美耐皿餐具

MELAMINE ROUND BOWL

美耐皿圆形碗

Item No. 型号	Size(cm) 规格(cm)	Case Pack 外箱装量	G.Weight 外箱毛重	Meas.(cm) 外箱体积(cm)
C097	D11.4x4.3	144pcs	15kgs	49x37x21
C098	D15.3x5.1	96pcs	18kgs	48x32x22
C099	D17.8x5.8	48pcs	13kgs	37x37x23
C100	D20.3x6.5	48pcs	16kgs	43x43x22
C101	D22.9x7	36pcs	16kgs	48x48x19
C102	D25.4x7.5	24pcs	14kgs	53x27x23
C103	D28x8	24pcs	16kgs	58x29x36
C104	D30.5x8.6	18pcs	15.5kgs	30x30x33

C100



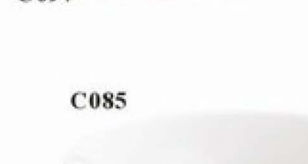
C101



C099



C097



C098



C104



C103



C102



MELAMINE ROUND BOWL

美耐皿圆形碗

Item No. 型号	Size(cm) 规格(cm)	Case Pack 外箱装量	G.Weight 外箱毛重	Meas.(cm) 外箱体积(cm)
C081	D15.2x7.9	72pcs	17kgs	49x49x19
C082	D17.8x8.4	48pcs	16kgs	38x38x25
C083	D20.3x8.9	36pcs	15.5kgs	43x43x20
C084	D22.8x9.4	36pcs	18kgs	47x47x21
C085	D25.4x9.9	24pcs	16kgs	52x26x27

C081



C083



C081



C082



C083



C084



C084



C085



C085



MELAMINE DINNERWARE

美耐皿餐具

MELAMINE SWIRL SQUARE BOWL

美耐皿螺旋方形碗

Item No. 型号	Size(cm) 规格(cm)	Case Pack 外箱装量	G.Weight 外箱毛重	Meas.(cm) 外箱体积(cm)
C020	11.2x11.2x5	108pcs	15kgs	36x36x22
C021	12.5x12.5x5.6	72pcs	14kgs	40x27x25
C022	14.9x14.9x6	72pcs	17.5kgs	47x32x23
C023	17.4x17.4x6.5	48pcs	16kgs	38x38x24
C024	19.9x19.9x7	36pcs	15.5kgs	42x42x21

C024



C023



C022



C021



C020



MELAMINE SQUARE BOWL

美耐皿方形碗

Item No. 型号	Size(cm) 规格(cm)	Case Pack 外箱装量	G.Weight 外箱毛重	Meas.(cm) 外箱体积(cm)
C114	D16.5x7.3	36pcs	13kgs	35x35x24
C115	D18.5x8.2	36pcs	16kgs	39x39x24
C116	D20.7x9.2	24pcs	15kgs	43x43x20
C117	D22.9x10.3	24pcs	19kgs	47x47x21

C116



C114



C117



C115



MELAMINE DINNERWARE

美耐皿餐具

MELAMINE SQUARE BOWL

美耐皿方形碗

Item No. 型号	Size(cm) 规格(cm)	Case Pack 外箱装量	G.Weight 外箱毛重	Meas.(cm) 外箱体积(cm)
C149	17.8x17.6x8.8	48pcs	17kgs	37x37x29
C150	20.3x20.2x9.4	36pcs	17kgs	41.5x41.5x23
C151	22.9x22.7x10	36pcs	20kgs	48x48x23
C152	25.5x25.3x10.6	24pcs	17kgs	52x25.5x29
C153	28x27.8x11.2	16pcs	14.5kgs	28x28x37
C154	30.5x30.3x11.8			
C155	33.1x32.8x12.4	12pcs	15kgs	33x33x31

C155



Biggest size

33.1cm

C154



C153



C150



C152



C149



C151



MELAMINE SQUARE FROSTED BOWL

美耐皿方形磨砂碗

Item No. 型号	Size(cm) 规格(cm)	Case Pack 外箱装量	G.Weight 外箱毛重	Meas.(cm) 外箱体积(cm)
C012	11.4x11.4x3.9			
C013	12.7x12.7x4.2			
C014	15.2x15.2x5.1	72pcs	19kgs	32x32x27
C015	17.8x17.8x6			
C016	20.3x20.3x6.5			
C017	22.9x22.9x7			

C017



C015



C016



C014



C013



C012



MELAMINE DINNERWARE

美耐皿餐具

MELAMINE SWIRL ROUND BOWL

美耐皿螺纹圆形碗

Item No. 型号	Size(cm) 规格(cm)	Case Pack 外箱装量	G.Weight 外箱毛重	Meas.(cm) 外箱体积(cm)
C042	D11.4x5.3	144pcs	14kgs	48x36x22
C046	D14x6.1	108pcs	17kgs	44x44x25
C026	D16.5x7.5	48pcs	15kgs	35x35x27
C030	D18.6x8.2	36pcs	15kgs	39x39x24
C034	D20.7x9.1	36pcs	19kgs	43.5x43.5x25.5
C038	D22.8x10.1	24pcs	16kgs	47x47x21



MELAMINE SWIRL ROUND BOWL

美耐皿螺纹圆形碗

Item No. 型号	Size(cm) 规格(cm)	Case Pack 外箱装量	G.Weight 外箱毛重	Meas.(cm) 外箱体积(cm)
C053	D18.9x7.5	48pcs	16kgs	39x39x31
C061	D22.3x9	24pcs	15.5kgs	46x46x22
C063	D25.4x9.5	24pcs	19kgs	52x52x22
C067	D29.2x10	12pcs	14kgs	30x30x38
C071	D34.3x10.8	12pcs	19kgs	35x35x39



MELAMINE DINNERWARE

美耐皿餐具

MELAMINE SWIRL ROUND BOWL

美耐皿螺纹圆形碗

Item No. 型号	Size(cm) 规格(cm)	Case Pack 外箱装量	G.Weight 外箱毛重	Meas.(cm) 外箱体积(cm)
C004	D17.2x7.2	54pcs	15kgs	35x35x30
C005	D20.4x8.1	36pcs	16kgs	42x42x26
C006	D22.3x9	24pcs	15kgs	46x23x36



MELAMINE SWIRL ROUND FROSTED BOWL

美耐皿螺纹圆形磨砂碗

Item No. 型号	Size(cm) 规格(cm)	Case Pack 外箱装量	G.Weight 外箱毛重	Meas.(cm) 外箱体积(cm)
C044	D11.4x5.3	144pcs	14kgs	48x36x22
C051	D17.2x7.2	72pcs	20kgs	36x36x37
C055	D18.9x7.5	48pcs	17kgs	39x39x31
C058	D20.4x8.1	48pcs	21kgs	43x43x30
C065	D25.4x9.5	24pcs	19kgs	52x52x22
C069	D29.2x10	12pcs	14kgs	30x30x38
C073	D34.3x10.8	12pcs	19kgs	35x35x39



Biggest size
34.3cm



MELAMINE DINNERWARE

美耐皿餐具

MELAMINE SWIRL ROUND FROSTED BOWL

美耐皿螺纹圆形磨砂碗

Item No. 型号	Size(cm) 规格(cm)	Case Pack 外箱装量	G.Weight 外箱毛重	Meas.(cm) 外箱体积(cm)
C028	D16.5x7.5	48pcs	15kgs	35x35x27
C032	D18.6x8.2	36pcs	15kgs	39x39x24
C036	D20.7x9.1	36pcs	16kgs	43x43x25
C040	D22.8x10.1	24pcs	16kgs	48x48x24



MELAMINE IN OUT SWIRL ROUND BOWL

美耐皿内外螺纹圆形碗

Item No. 型号	Size(cm) 规格(cm)	Case Pack 外箱装量	G.Weight 外箱毛重	Meas.(cm) 外箱体积(cm)
C027	D16.5x7.5	48pcs	16kgs	35x35x30
C031	D18.6x8.2	36pcs	16.5kgs	39x39x24
C035	D20.7x9.1	24pcs	15kgs	44x44x22
C039	D22.8x10.1	24pcs	18.5kgs	48x48x24



C027
C031
C035
C039

MELAMINE DINNERWARE

美耐皿餐具

MELAMINE IN OUT SWIRL ROUND BOWL

美耐皿内外螺纹圆形碗

Item No. 型号	Size(cm) 规格(cm)	Case Pack 外箱装量	G.Weight 外箱毛重	Meas.(cm) 外箱体积(cm)
C043	D11.5x5.3	144pcs	15kgs	48x36x22
C047	D14x6.1	108pcs	17kgs	44x44x25
C050	D17.2x7.2	64pcs	17kgs	36x36x37
C054	D18.9x7.5	48pcs	18kgs	39x39x31
C060	D22.3x9	24pcs	15.5kgs	46x46x22



C043



C047



C050



C054



C060



MELAMINE IN OUT SWIRL ROUND BOWL

美耐皿内外螺纹圆形碗

Item No. 型号	Size(cm) 规格(cm)	Case Pack 外箱装量	G.Weight 外箱毛重	Meas.(cm) 外箱体积(cm)
C064	D25.4x9.5	24pcs	20kgs	52x52x22
C068	D29.2x10	12pcs	14kgs	30x30x38
C072	D34.3x10.8	12pcs	19kgs	35x35x39

C064



C068



Biggest size

34.3cm

C072



MELAMINE DINNERWARE

美耐皿餐具

MELAMINE IN OUT SWIRL ROUND FROSTED BOWL

美耐皿内外螺纹圆形磨砂碗

Item No. 型号	Size(cm) 规格(cm)	Case Pack 外箱装量	G.Weight 外箱毛重	Meas.(cm) 外箱体积(cm)
C052	D17.2x7.2	64pcs	17kgs	36x36x37
C059	D20.4x8.1	36pcs	16kgs	43x43x28
C066	D25.4x9.5	24pcs	18kgs	52x52x22.5
C070	D29.2x10	12pcs	14kgs	30x30x38
C074	D34.3x10.8	12pcs	19kgs	35x35x39.5



Biggest size

34.3cm

MELAMINE IN OUT SWIRL ROUND FROSTED BOWL

美耐皿内外螺纹圆形磨砂碗

Item No. 型号	Size(cm) 规格(cm)	Case Pack 外箱装量	G.Weight 外箱毛重	Meas.(cm) 外箱体积(cm)
C045	D11.5x5.3	144pcs	14kgs	48x36x22
C049	D14x6.1	108pcs	17kgs	44x44x25



MELAMINE DINNERWARE

美耐皿餐具

MELAMINE IN OUT SWIRL ROUND FROSTED BOWL

美耐皿内外螺纹圆形磨砂碗

Item No. 型号	Size(cm) 规格(cm)	Case Pack 外箱装量	G.Weight 外箱毛重	Meas.(cm) 外箱体积(cm)
C029	D16.5x7.5	48pcs	17kgs	35x35x27
C033	D18.6x8.2	36pcs	16kgs	39x39x24
C041	D22.8x10.1	24pcs	18kgs	48x48x24



MELAMINE SWIRL ROUND BOWL

美耐皿螺纹圆形碗

Item No. 型号	Size(cm) 规格(cm)	Case Pack 外箱装量	G.Weight 外箱毛重	Meas.(cm) 外箱体积(cm)
C001	16.1x15.3x8.9	36pcs	15kgs	48x32x23
C002	18.5x17.6x11.8	24pcs	15kgs	39x37x24
C003	19.6x18.7x10.5	24pcs	17kgs	41x40x26



MELAMINE SWIRL ROUND BOWL

美耐皿螺纹圆形碗

Item No. 型号	Size(cm) 规格(cm)	Case Pack 外箱装量	G.Weight 外箱毛重	Meas.(cm) 外箱体积(cm)
C010	D16.3x7.9	48pcs	15kgs	34x34x29
C018	D17.8x7.2	48pcs	16kgs	37x37x24
C019	D21.4x8	36pcs	16.5kgs	44x44x24



MELAMINE DINNERWARE

美耐皿餐具

MELAMINE ROUND BOWL

美耐皿圆形碗

Item No. 型号	Size(cm) 规格(cm)	Case Pack 外箱装量	G.Weight 外箱毛重	Meas.(cm) 外箱体积(cm)
C011	D11.4x5.9	72pcs	16kgs	36x36x31

C011



MELAMINE SOUP BOWL

美耐皿汤碗

Item No. 型号	Size(cm) 规格(cm)	Case Pack 外箱装量	G.Weight 外箱毛重	Meas.(cm) 外箱体积(cm)
D021	16.3x13.9x10.5	36pcs	14kgs	44x34x43
D022	20.5x17.4x12	24pcs	14.5kgs	55x43x33
D094	D8.1x6	96pcs	14kgs	34x34x24

D094



D021



D022



MELAMINE SOUP BOWL

美耐皿汤碗

Item No. 型号	Size(cm) 规格(cm)	Case Pack 外箱装量	G.Weight 外箱毛重	Meas.(cm) 外箱体积(cm)
C136	D25.4x12.2	16pcs	15kgs	52x25x33
C137	D27.9x13.6	12pcs	15kgs	57x28x28

C136



C137



MELAMINE DINNERWARE

美耐皿餐具

MELAMINE SOUP BOWL

美耐皿汤碗

Item No. 型号	Size(cm) 规格(cm)	Case Pack 外箱装量	G.Weight 外箱毛重	Meas.(cm) 外箱体积(cm)
D031	D10x6.9	96pcs	15kgs	38x38x46
D106	D10.6x10.5	80pcs	15.5kgs	44x44x42

D031



D106



MELAMINE SOUP BOWL

美耐皿汤碗

Item No. 型号	Size(cm) 规格(cm)	Case Pack 外箱装量	G.Weight 外箱毛重	Meas.(cm) 外箱体积(cm)
D020	D11.2x10.5	36pcs	16kgs	35x35x45
D025	D10x7.1	64pcs	15kgs	41x41x31
D027	D10.9x8	60pcs	17.5kgs	43x33x43
D028	D11.3x10.3	72pcs	26kgs	44x33x45

D025



D027



D020



D028



MELAMINE SOUP BOWL

美耐皿汤碗

Item No. 型号	Size(cm) 规格(cm)	Case Pack 外箱装量	G.Weight 外箱毛重	Meas.(cm) 外箱体积(cm)
D032	14.2x12.2x5.5	54pcs	16kgs	38x38x37
D023	D11x5.5	72pcs	17.5kgs	45x34x37
D024	D16.8x8	24pcs	19kgs	52x35x35
D029	D15.2x7.4	36pcs	15kgs	45x30x49
D030	D13.1x6.5	48pcs	17kgs	53x40x30
D033	D15.7x5.2	36pcs	17kgs	47x32x34

D030



D023



D024



D033



D029



D032

